

# **GREENTOUR**

## **TRUCK & BUS RADIAL TIRE CATALOGUE**





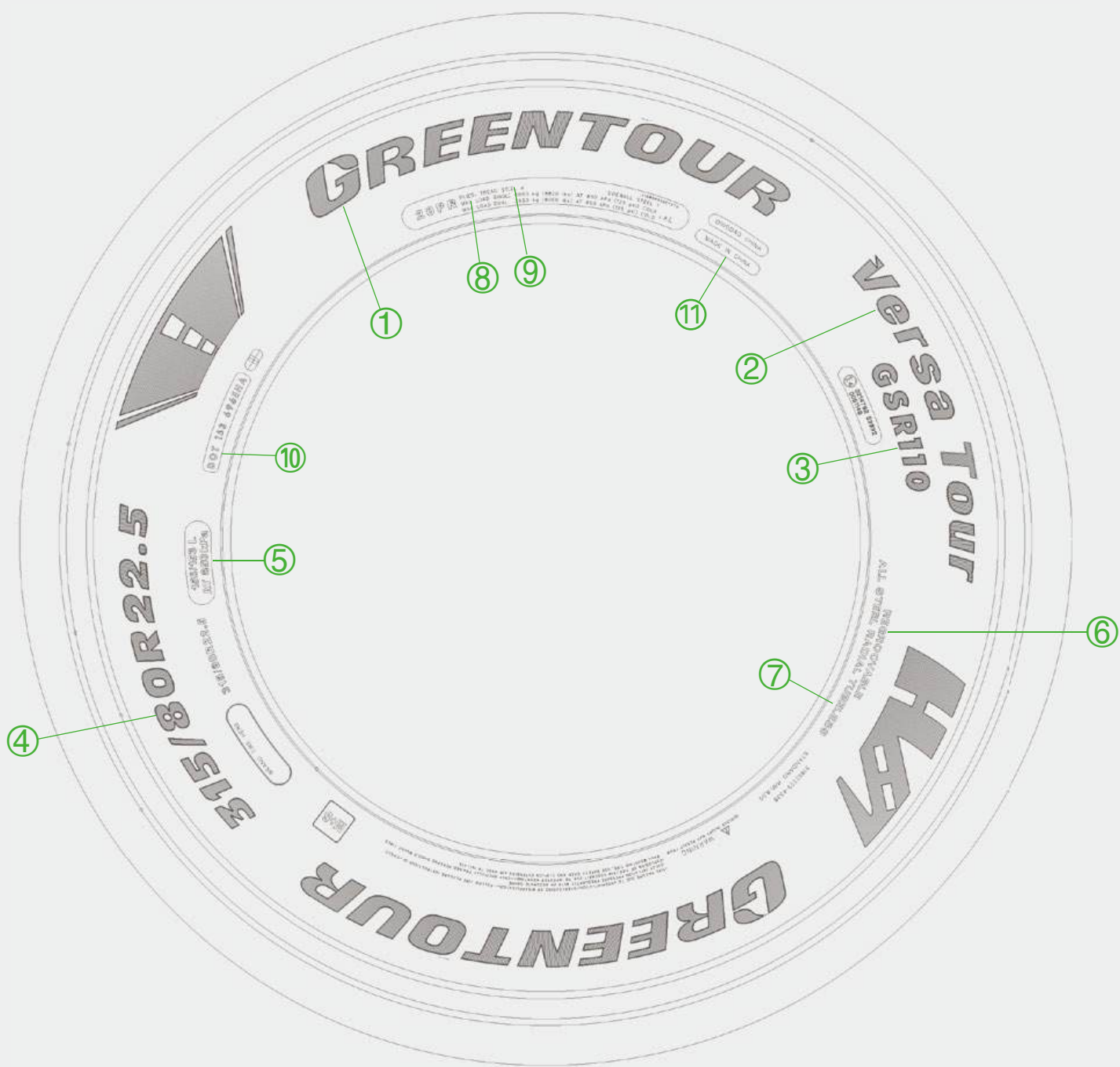
# TIRE SOLUTIONS FOR TRANSPORTATION

GREENTOUR is a leading tire solution provider. Our expert team tackles challenges such as increased traffic, heavy loads, and uncertain road conditions. With a focus on minimizing operational costs, our products ensure continuous vehicle operation. As trusted partners in the face of evolving international regulations, GREENTOUR tires guarantee reliability for every journey.





# Sidewall Markings



① GREENTOUR brand

② VersaTour series

③ Pattern name

④ Size designation

- 315 = tire nominal section width in mm
- 80 = nominal aspect ratio (nominal height to nominal width = 80%)
- R = radial construction
- 22.5 = nominal rim diameter in inch

⑤ Service description

- Consisting of
- 156 = load index for single fitment
- 153 = load index for dual fitment
- L = speed symbol

⑥ Regroovable

The manufacturer has designed the tire for regrooving

⑦ Tube type

⑧ Load designation

For single/dual fitment and indication of max. inflation pressure in psi (1 bar = 14.5 psi)

⑨ Data as per safety standards on inner construction or number of plies, in this case, **Tread:** under the tread, there are several steel cord plies (including casing) **Sidewall:** viewed from the side there is one steel cord ply (in this case the casing ply)

⑩ DOT

= U.S. Department of Transportation (responsible for tire safety standards) Tire complies with requirements set out in US Reg. FMVSS 119

⑪ Country of origin

# Tire Range

**RouteTour** | The RouteTour Series tires are engineered for long-distance travel and are characterized by maintaining a steady speed with minimal need for braking or accelerating. The journey takes place on a well-maintained road surface with fewer curves, allowing for a smoother and more consistent driving experience.

Steer	<b>GSL910</b>	<b>GSL920</b>	<b>GSL921</b>		
					
Drive	<b>GDL810</b>	<b>GDL812</b>	<b>GDL821</b>		
					
Trailer	<b>GSL910</b>	<b>GSL920</b>	<b>GSL921</b>	<b>GTL310</b>	<b>GTL320</b>
					

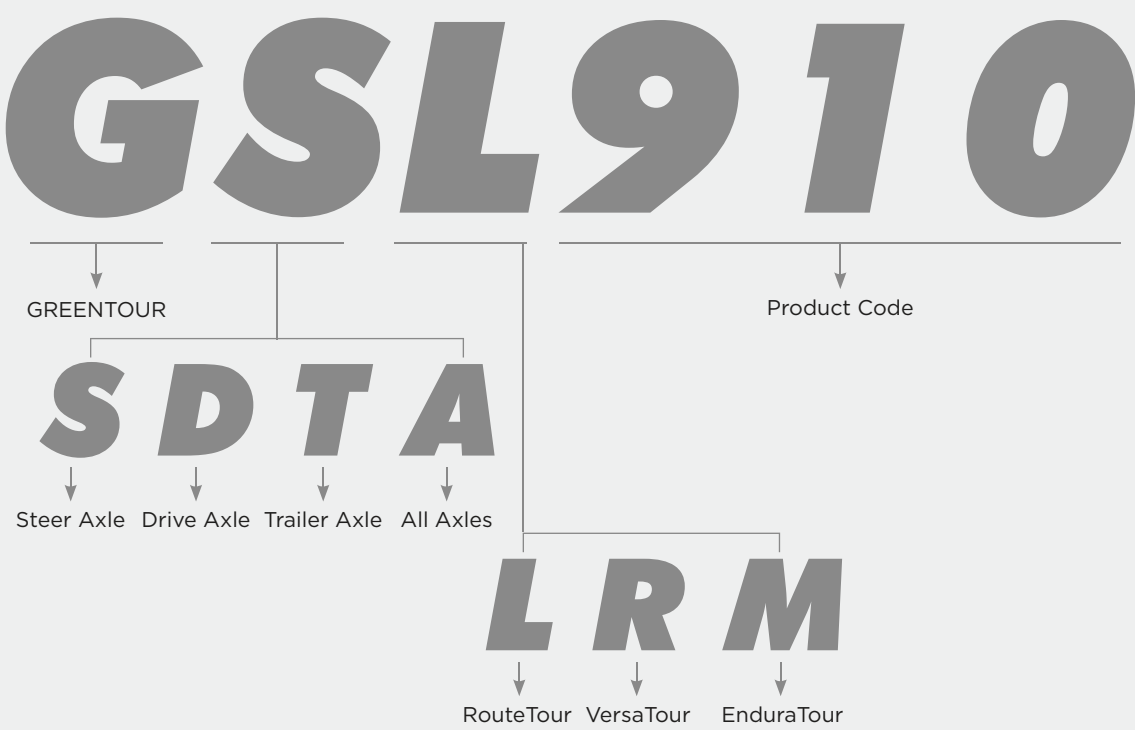
**VersaTour** | The VersaTour Series tires are designed for extended trips that involve frequent stops, speed fluctuations, and directional changes. The roads are well-paved but include curves and occasionally rough surfaces, offering a combination of manageable and challenging driving conditions.

Steer	<b>GSR110</b> 		
Drive	<b>GDR210/GDR210+</b> 	<b>GDR220</b> 	
Trailer	<b>GSR110</b> 	<b>GTR311/GTR311N</b> 	<b>GTR321</b> 
All Position	<b>GAR111</b> 		

**EnduraTour** | The EnduraTour Series tires are built for both on-road and off-road performance, excelling in aggressive, uneven, and muddy terrains, and are ideal for carrying heavy loads at medium to slow speeds with frequent stops, offering exceptional durability and adaptability to diverse road conditions.

Drive	<b>GDM610</b> 	<b>GDM612</b> 	<b>GDM613</b> 	<b>GDX711</b> 
All Position	<b>GAM510</b> 	<b>GAM512 GAM512HD</b> 		

# Tire Naming System





# The RouteTour Series

The RouteTour Series tires are engineered for long-distance travel and are characterized by maintaining a steady speed with minimal need for braking or accelerating. The journey takes place on a well-maintained road surface with fewer curves, allowing for a smoother and more consistent driving experience.



**RouteTour**  
**GSL910**  
**GSL910N**

**RouteTour**  
**GSL920**

**RouteTour**  
**GSL921**

**RouteTour**  
**GDL810**



**RouteTour**  
**GDL812**

**RouteTour**  
**GDL821**

**RouteTour**  
**GTL310**

**RouteTour**  
**GTL320**



# RouteTour

## GSL910/GSL910N

Premium Steer Tire For Long Haul Application



Introducing the GSL910, featuring an optimized belt layer for reduced shoulder wear and extended life, stone ejectors for fewer punctures, a specialized tread for enhanced high-speed stability, and dense tread sipping for superior wet grip. A revolution in tire durability and safety.

### A Enhanced Steering Response

The optimized tread pattern, combined with the continuous center rib, provides precise steering feedback, ensuring quick and accurate responses to driver inputs, especially critical during lane changes and tight maneuvers.

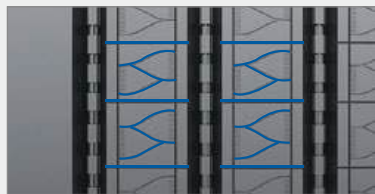


### B Enhanced High-Speed Stability

The robust sidewall construction and optimized tread stiffness work together to maintain tire shape and contact patch integrity at high speeds, ensuring that the vehicle remains stable and predictable during long highway drives.

### C Superior Wet Braking

The advanced tread pattern of the GSL910 is engineered to shorten stopping distances on wet surfaces, improving safety and providing peace of mind in adverse weather conditions.



GSL910

GSL910N

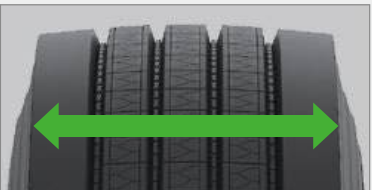
### D Advanced Rubber Compound

The tire features an advanced rubber compound that enhances tread wear resistance, extending the life of the tire and reducing the need for frequent replacements.



### E Wide Tread Footprint

A wide tread footprint promotes uniform tread wear, maximizing mileage and ensuring consistent performance throughout the tire's service life.



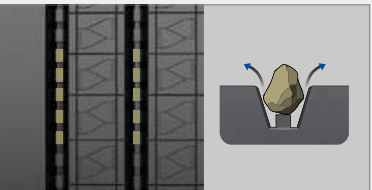
### F Optimized Groove Geometry

The tire's grooves are designed to be self-cleaning, ensuring that mud, snow, and other debris are quickly ejected, maintaining consistent performance and extending mileage in various conditions.



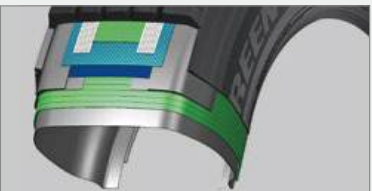
### G Stone Ejectors

Stone ejectors embedded in the tread help prevent debris from lodging in the tire, reducing wear and extending the overall life of the tire.



### H Robust Casing Construction

The GSL910 is built with a robust casing construction that withstands heavy loads and impact damage, making it a reliable choice for long-haul operations.



Inch	Size	PR	LI/SS	TD (mm)	Plant
22.5	315/70R22.5 <small>GSL910N</small>	18PR	156/150L(152/148M)	15.5	VN
	315/80R22.5 <small>GSL910N</small>	20PR	156/153L	16.5	VN
	315/80R22.5 <small>GSL910</small>	20PR	156/153L	16.5	CN VN



# RouteTour **GSL920**

Premium Steer Tire For Long Haul Application



The GSL920 features a pioneering carcass structure for optimal ground contact, delicately arranged sipes for enhanced grip, an advanced formula for wear resistance and fuel efficiency, and an effective groove design for debris protection on diverse routes.

### A Four Main Groove Design

The classic four-groove pattern is specifically designed for long-distance driving, providing excellent handling for straight-line stability. Its superior water drainage capabilities reduce the risk of hydroplaning during rainy conditions.

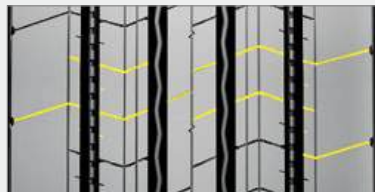


### B Continuous Central Rib

Improves straight-line stability and directional control, making it ideal for long-distance highway driving.

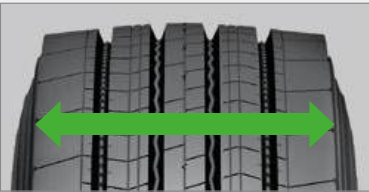
### C Superior Tread Design

The crown is reinforced with multiple sipes, enhancing the tire's resistance to wet conditions and improving safety during driving in rain and snow.



### D Wide Tread Design

The wide contact patch increases the tire's ground contact area, disperses load pressure, improves wear resistance, and is ideal for heavy-duty long-haul transportation.



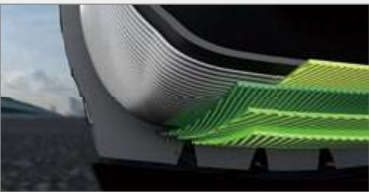
### E Enhanced Lateral Stability

Reinforced carcass structure and specially strengthened shoulders improve lateral stability during high-speed cornering.



### F High Retreadability

The casing design allows for multiple retreads, extending the overall tire lifespan and reducing long-term costs.



Inch	Size	PR	LI/SS	TD (mm)	Plant
22.5	275/70R22.5	16PR	148/145M	14.5	VN
	295/80R22.5	18PR	154/149M	15.5	VN
	315/60R22.5	18PR	154/148L	13.0	VN
	315/70R22.5	18PR	156/150L(152/148M)	15.0	VN
	315/80R22.5	18PR	156/150L(154/150M)	16.0	VN
	385/55R22.5	20PR	160K(158L)	13.5	VN
	385/65R22.5	20PR	160K	13.5	VN



# RouteTour **GSL921**

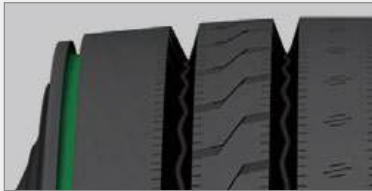
Steer Tire For Long Haul & Regional Application



The GSL921 features enhanced shoulder for reduced uneven wear, reinforced pattern design for superior traction, an intuitive wear indicator for easy maintenance, and an optimized carcass structure for balanced stress and improved safety.

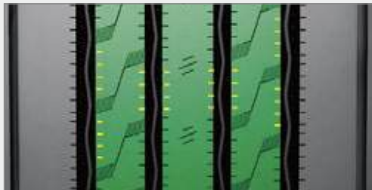
## A Decoupling Grooves

Annular grooves on both shoulders effectively prevent uneven shoulder wear, extending the tire's mileage.



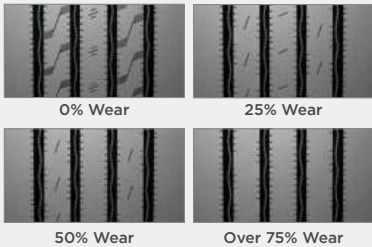
## B Enhanced Wet Traction

Three central circumferential ribs with densely distributed shallow sipes improve grip on wet surfaces, ensuring driving safety.



## C Wear Indicator

Evenly distributed three wear indicators on the central ribs provide a clear visual cue as the tread wears, signaling timely tire replacement to ensure driving safety.



## D Low Rolling Resistance

Smooth shoulder design reduces friction between the tire and the road, improving fuel efficiency and lowering operational costs.



## E Excellent Self-Cleaning Performance

The four main grooves feature an S-shaped design with V-shaped inclined walls, allowing trapped stones and mud to be expelled during high-speed rotation, providing effective self-cleaning.



## F Strong Retreadability

The distribution of shoulder materials is optimized to reduce heat buildup, preventing abnormal shoulder wear.

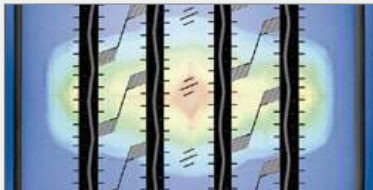
## G Optimized Shoulder Formula

Smooth shoulder design reduces friction between the tire and the road, improving fuel efficiency and lowering operational costs.



## H Even Tread Pressure Distribution

The optimized tread design ensures uniform ground contact pressure, resulting in a smooth wear surface and increased mileage.



Inch	Size	PR	LI/SS	TD (mm)	Plant
22.5	11R22.5	16PR	146/143M	14.0	VN
	11R22.5	18PR	COMING SOON		
	295/75R22.5	16PR	146/143M	14.0	VN
24.5	11R24.5	16PR	149/146M	14.0	VN



# RouteTour GDL810

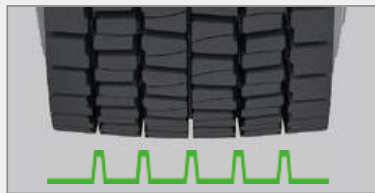
Premium Drive Tire For Long Haul & Regional Application



GDL810 truck tires have a wide tread design, an enlarged tread contact patch, and excellent wear resistance, which significantly extends the tire service life. The deepened tread depth and optimized arrangement of tread blocks provide excellent wear resistance and excellent grip, ensuring longer mileage make GDL810 the companion for your long truck journeys.

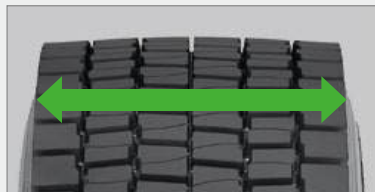
## A Deep Lug Tread Blocks

The tire features a deep tread pattern that provides exceptional traction in long-haul and regional. This design ensures the vehicle maintains grip in challenging conditions, enhancing overall safety.



## B Wide Contact Area

A wide contact area maximizes road grip, enhancing control and stability during long drives. This feature is especially beneficial when navigating through tight turns or when the vehicle is heavily loaded.



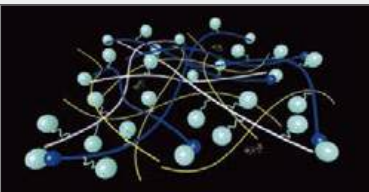
## C Open Shoulder Design

The open shoulder design of the GDL810 ensures effective water evacuation, reducing the risk of hydroplaning and maintaining strong traction on wet surfaces.



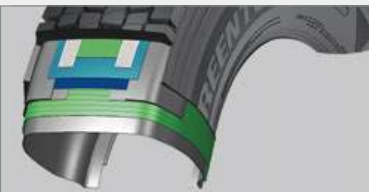
## D Tread Compound with Silica

The GDL810 is constructed with a silica-infused tread compound that enhances wear resistance, providing longer tire life and more consistent performance over time.



## E Tie-Bar Reinforcement

Tie-bar reinforcement stabilizes the tread blocks, preventing irregular wear and promoting even tread wear, which extends the tire's mileage.



## F High-Strength Steel Belts

The GDL810 is equipped with high-strength steel belts that offer superior protection against punctures and cuts, which is crucial for maintaining tire integrity over long distances.

## G Reinforced Carcass Construction

Reinforced carcass construction maintains structural integrity under heavy loads, ensuring that the tire can withstand the rigors of long-haul transportation.

## H Enhanced Bead Construction

The tire features enhanced bead construction that improves fitment on the rim, reducing slippage and ensuring that the tire remains securely in place during operation.



Inch	Size	PR	LI/SS	TD (mm)	Plant
22.5	295/80R22.5	18PR	152/149M	20.0	CN
	315/70R22.5	18PR	154/150L	20.0	CN VN
	315/80R22.5	20PR	156/153K	24.0	CN VN



# RouteTour GDL812

Drive Tire For Long Haul & Regional Application



The GDL812 features distinctive pattern blocks and intricate zigzag grooves for exceptional driving performance. A broad wide tread evenly distributes pressure and extends tire life. Its robust four-layer belt structure and integral connecting ribs increase crown rigidity, improve high-speed performance, and enhance wear resistance.

## A Wide-Tread Design

The GDL812 features a 9.5-inch wide-tread, providing enhanced stability and improved traction on various road conditions. This design maximizes contact with the road making it suitable for long-haul and regional applications.



## B Optimized Tread Compound

The tire is formulated with an advanced tread compound that maintains performance over extended periods while reducing rolling resistance. This balance improves fuel efficiency, allowing fleets to achieve better mileage with lower fuel costs.



## C Hexagonal Tread Pattern

The unique hexagonal tread pattern enhances stability by providing a larger contact area with the road. This design improves control, especially during high-speed driving, and reduces the risk of slippage.



## D Closed Shoulder Design

The closed shoulder design of the GDL812 maintains consistent performance and reduces irregular wear, especially during long highway drives. This feature ensures that the tire delivers reliable stability throughout its service life.

## E Robust Casing StructureConstruction

The GDL812 is designed with a robust casing structure that withstands the rigors of long-haul applications, offering protection against impact damage and punctures. This durability ensures that the tire can handle the demands of extensive highway use.



## F Heat Dissipation Design StructureConstruction

The GDL812 is engineered with a heat dissipation design that reduces the risk of blowouts or other heat-related failures. This feature is crucial for maintaining tire integrity during long hauls, particularly in hot climates.



## G Enhanced Sidewall Protection

The tire features reinforced sidewalls that offer extra protection against abrasions and curb damage, extending the tire's life and improving reliability in challenging road conditions.



Inch	Size	PR	LI/SS	TD (mm)	Plant
22.5	11R22.5	16PR	146/143L	22.5	CN VN
	11R22.5	18PR	COMING SOON		
	295/75R22.5	16PR	146/143L	22.5	VN
24.5	11R24.5	16PR	149/146L	22.5	VN



# RouteTour GDL821

Drive Tire For Long Haul Application



The GDL821 combines a unique unidirectional tread for optimal grip on wet and dry surfaces, with reinforced shoulders and a specialized formula for enhanced durability and fuel efficiency. Optimized contour ensures top high-speed performance and retreadability.

## A Unique Unidirectional Design

The tread pattern is designed for single-directional flow, providing optimal traction and drainage performance, ensuring good grip on both dry and wet surfaces.

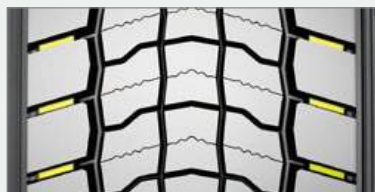
## B Unique Tread Block Design

Five large tread blocks are arranged laterally, with shoulder and central blocks staggered. This alternating ground contact reduces tire vibration during driving, enhancing ride stability.



## C Reinforced Shoulder Design

Independent tread patterns on both shoulders are connected by strengthening ribs, ensuring tire drive force while preventing tread tearing due to excessive deformation during heavy acceleration, thus enhancing tire lifespan.



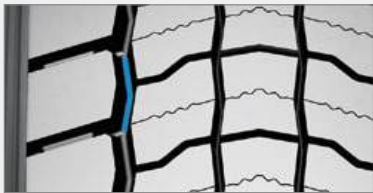
## D Wear-Resistant Compound

Unyielding wear-resistant compound that reduces wear during prolonged high-speed driving, extending tire lifespan and providing excellent mileage performance.



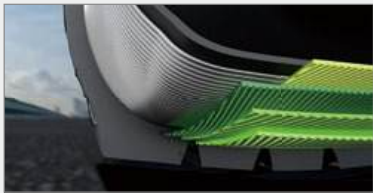
## E Self-Cleaning Capability

The “V” shaped tread grooves automatically expel stones, mud, and other debris during driving, keeping the tread surface clean.



## F Reinforced Casing Structure

Built with UHT steel cords for a robust structure, the tire ensures enhanced durability and damage resistance while supporting multiple retreads, effectively reducing replacement costs and enhancing performance during prolonged high-speed driving.



## G Wide Contact Area

The wide tread design increases the tire’s ground contact area, distributes load pressure evenly, reduces tire wear, and enhances mileage.

Inch	Size	PR	LI/SS	TD (mm)	Plant
22.5	295/60R22.5	18PR	150/147L	15.5	VN
	315/60R22.5	18PR	152/148L	16.5	VN
	315/70R22.5	18PR	156/150L(152/148M)	18.0	VN
	315/80R22.5	18PR	156/150L(154/150M)	17.5	VN



# RouteTour GTL310

Premium Trailer Tire For Long Haul & Regional Application



Meet the GTL310, tailor-made for long-distance paved roads. This tire boasts V-pattern treads for efficient debris clearance, stone-ejecting grooves for reduced tread wear, a broad contact surface for even wear and extended mileage, and sleek steel strips to decrease rolling resistance and fuel consumption. Ideal for drivers seeking reliability and stability on their journeys.

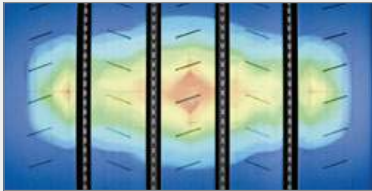
## A Enhanced Shoulder Design

The GTL310 features an enhanced shoulder design that reduces uneven wear in high-scrub applications, extending tire life and ensuring more consistent performance over time.



## B Optimized Footprint Distribution

The tire's design ensures optimal footprint distribution, promoting even wear across the tread and extending tire life. This design reduces the frequency of replacements, making it a cost-effective option for fleet operators.



## C High-Wear Tread Compound

Constructed with a high-wear tread compound, the GTL310 resists abrasion and provides more miles per tire, offering excellent value over its lifespan.



## D Advanced Tread Design

The GTL310 incorporates an advanced tread design that minimizes energy loss, improving fuel efficiency and lowering operating costs over long distances.



## E Optimized Tread Depth

The tire features an optimized tread depth that balances rolling resistance and traction, enhancing fuel efficiency without compromising performance.



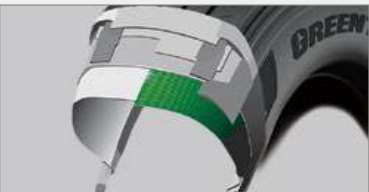
## F Sturdy Bead Design

The GTL310's sturdy bead design ensures a secure fit on the rim, enhancing stability during heavy-duty operations. This feature is particularly important for maintaining control and safety in trailer applications.



## G Reinforced Carcass Structure

The GTL310's reinforced carcass structure increases load-bearing capacity and reduces deformation under stress, maintaining tire performance and reliability during demanding long-haul operations.



Inch	Size	PR	LI/SS	TD (mm)	Plant
19.5	435/50R19.5	20PR	160J	12.5	VN
	445/45R19.5	20PR	160J	13.0	VN
22.5	385/65R22.5	24PR	164K	15.5	CN



# RouteTour GTL320

Trailer Tire For Long Haul & Regional Application



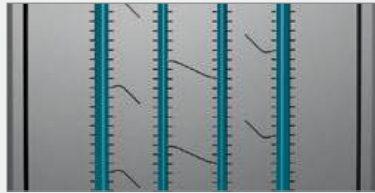
The GTL320 features innovative anti-wear shoulder, a specialized trailer wheel design for fuel efficiency, reinforced tread for superior safety, and streamlined smooth shoulder to increase mileage and reduce rolling resistance.

### A Reinforced Bead Design

The enhanced bead design reduces the risk of damage caused by high torque during casing deformation when the vehicle frequently turns or changes lanes, improving tire stability.

### B Straight Groove Design

Featuring four straight grooves that improve water evacuation, reduce the risk of lateral skidding, and enhance lateral stability, boosting wet surface performance.



### C Central Rib Stability

The central rib design provides excellent straight-line stability, making it particularly suitable for long-haul trailers on highways.

### D Retreadable

UHT steel cords create a more durable casing structure, suitable for multiple retreads, reducing tire replacement costs for long-haul trailers.



### E Low Rolling Resistance

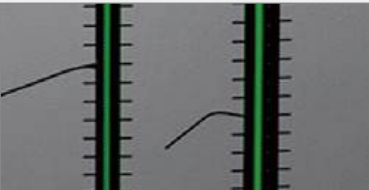
Smooth sides with a closed-shoulder design reduce the tire's rolling resistance, improving fuel efficiency and lowering transportation costs.

### F Low Void Ratio Tread Design

The high saturation tread design increases the contact area of the tire crown, evenly dispersing ground pressure and enhancing tire mileage.

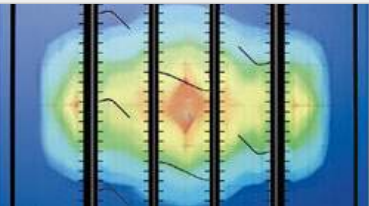
### G Self-Cleaning Grooves

“V” design, allowing embedded stones and debris to be ejected during high-speed rotation, protecting the tire crown from damage.



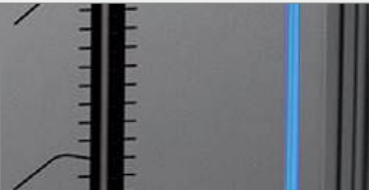
### H Balanced Wear Design

The crown structure is adjusted to optimize the contact footprint, distributing tread pressure evenly. This ensures more uniform wear on the crown, reduces the need for replacements due to uneven wear, and extends the tire's lifespan.



### I Shoulder Anti-Irregular Wear Grooves

The circumferential buffer groove design on both shoulders effectively cushions vehicle pressure during ground contact, reducing the occurrence of irregular wear.



Inch	Size	PR	LI/SS	TD (mm)	Plant
22.5	11R22.5	14PR	144/142M	9.5	VN
	11R22.5	18PR	COMING SOON		
	295/75R22.5	14PR	144/141M	9.0	VN



# The VersaTour Series

The VersaTour Series tires are designed for extended trips that involve frequent stops, speed fluctuations, and directional changes. The roads are well-paved but include curves and occasionally rough surfaces, offering a combination of manageable and challenging driving conditions.



**VersaTour**  
**GSR110**

**VersaTour**  
**GAR111**

**VersaTour**  
**GDR210**  
**GDR210+**

**VersaTour**  
**GDR220**

**VersaTour**  
**GTR311**  
**GTR311N**

**VersaTour**  
**GTR321**



# VersaTour GSR110

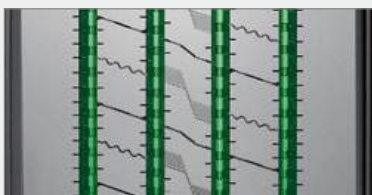
Steer/Trailer Tire For Regional Application



The GSR110 tire features a pattern design with fine sipes to enhance wet grip and reduce skidding in rain. Its stone-ejection technology minimizes cracking, extending lifespan. A special compound reduces rolling resistance, and smooth shoulders provide stability at high speeds, preventing uneven wear.

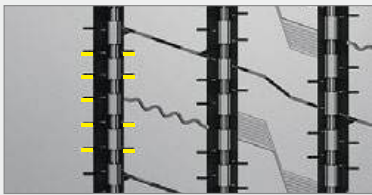
## A Optimized Main Groove Design

Reduces lateral tire sliding during driving, enhancing handling performance in complex road conditions, and features stone ejection design to prevent debris from getting lodged, minimizing tread damage.



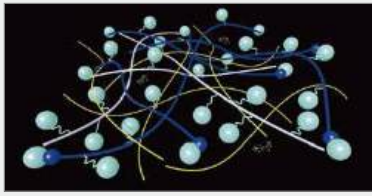
## B Multi-Sipes Design

Enhances tread grip, ensuring controllability and traction on wet and snowy surfaces.



## C High Heat Resistance

Utilizing a special rubber compound, the tire offers excellent heat resistance during prolonged driving, reducing the risk of overheating and ensuring safety.



## D Enhanced Shoulder Design

Optimized shoulder design reduces irregular wear, improving wear resistance and handling stability.



## F Robust And Durable

Featuring a reinforced casing structure that enhances impact resistance and puncture protection, adapting to various road conditions and providing a longer lifespan.



Inch	Size	PR	LI/SS	TD (mm)	Plant
17.5	9.5R17.5	18PR	143/141J	13.5	CN
	9.5R17.5	18PR	143/141K	13.5	CN
	205/75R17.5	14PR	124/122M	13.0	VN
	215/75R17.5	16PR	135/133L	12.5	CN
	215/75R17.5	16PR	135/133L(128/126M)	12.5	VN
	235/75R17.5	18PR	143/141L	13.0	CN
	235/75R17.5	18PR	143/141L(132/130M)	13.0	VN
19.5	245/70R17.5	18PR	143/141K	13.0	VN
	225/70R19.5	14PR	128/126L	12.5	VN
	245/70R19.5	18PR	144/142J(136/134M)	13.0	VN
	265/70R19.5	18PR	143/141J(140/138M)	13.5	VN
	285/70R19.5	18PR	150/148K(146/144M)	13.0	VN
22.5	11R22.5	16PR	148/145M	15.5	CN VN
	11R22.5	18PR	149/146L	15.5	CN
	12R22.5	18PR	152/149L	15.0	CN
	255/70R22.5	16PR	140/137M	13.5	VN
	275/70R22.5	16PR	148/145M	14.5	CN
	275/80R22.5	16PR	149/146L	14.5	VN
	295/75R22.5	14PR	144/141L	15.5	VN
	295/75R22.5	16PR	146/143L	15.5	VN
	295/80R22.5	18PR	154/149L	15.5	CN
24.5	315/80R22.5	20PR	156/153L	15.5	CN
	11R24.5	16PR	149/146M	15.5	VN



# VersaTour GAR111

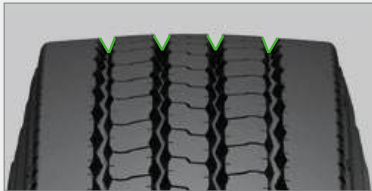
All-Position Tire For Regional Application



GAR111 offers a unique design with densely packed shoulders for heat dissipation. W-shaped grooves and curved channels prevent stone trapping, while steel pieces enhance wet resistance. Irregular pattern blocks around the cap reduce vibration and noise, ensuring a quieter ride. GAR111 combines style with durability for comprehensive vehicle performance.

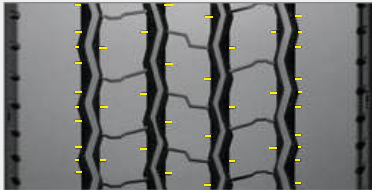
## A Excellent Self-Cleaning Grooves

The tread features a “V” design that ejects stones trapped in the grooves during high-speed driving, effectively reducing stone damage.



## B Anti-Slip Design

Four tread grooves are lined with densely arranged micro steel sipes, enhancing the tire's anti-slip performance and reducing the risk of skidding.



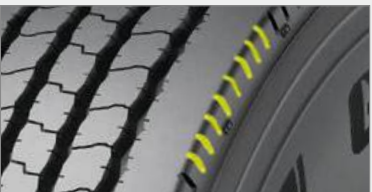
## C Excellent Adaptability

Suitable for various driving environments, providing outstanding performance whether on highways or intercity roads.



## D Dense Siping Design

The crown features densely arranged shoulder grooves, maintaining both excellent heat dissipation and driving performance.



## E Optimized Tread Design

The crown features densely arranged shoulder grooves, maintaining both excellent heat dissipation and driving performance.



## F Shock Absorption Design

The three central ribs encircle the crown with tread blocks arranged in a staggered pattern, alternating contact with the road surface during travel. This design reduces vibration, providing a smoother ride while the tire is in motion.

## G Retreadable

The robust and resilient steel belt construction enhances the tire's retreadability, allowing for multiple retread cycles.

Inch	Size	PR	LI/SS	TD (mm)	Plant
16	7.50R16LT	14PR	122/118L	12.5	CN



# VersaTour

## GDR210 / GDR210+

Drive Tire For Regional Application



The GDR210 drive tire, featuring a block pattern design and six independent sections, enhances grip and power transfer. Lateral sipes in each block reduce wear, and its wear-resistant formula extends mileage. Reinforced with high-strength steel, it minimizes deformation for reliable traction. GDR210: durability for your journey.

### A Stone Ejection Design

The tread blocks are optimized with angled designs and a unidirectional pattern, enabling the expulsion of trapped stones and providing excellent self-cleaning capabilities.



### B Reinforced Tread Blocks

The central crown features independent hexagonal tread blocks complemented by lateral grooves, enhancing exceptional grip, especially on wet and muddy surfaces.

### C Tear-Resistant Tread Design

The specially formulated tread enhances tear resistance, extending the tire's lifespan under harsh conditions.



GDR210+

GDR210

### D Reinforced Strengthened

The bead design is reinforced to ensure a tight fit between the tire and the rim during vehicle power output, enhancing driving safety.



### E Reinforced Block Connectors

The tread blocks are interconnected with reinforcing ribs, reducing the flexing of individual blocks under load and minimizing feathering wear.

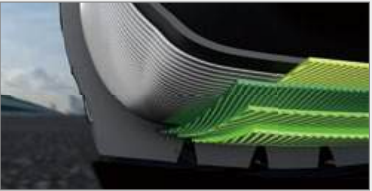


### F Effective Heat Dissipation Design

Grooves between the tread blocks aid in rapid heat dissipation, ensuring the crown maintains durability during prolonged driving.

### G Retreadability

This tire is designed with retread potential in mind, featuring a sturdy and durable construction suitable for multiple retreads, thereby extending its lifespan.



Inch	Size	PR	LI/SS	TD (mm)	Plant
22.5	11R22.5 GDR210	16PR	148/145L	20.0	CN
	11R22.5 GDR210	18PR	COMING SOON		
	275/80R22.5 GDR210	16PR	149/146L	20.0	VN
	315/80R22.5 GDR210	20PR	156/153K	20.0	CN
	295/80R22.5 GDR210+	18PR	152/149L	21.0	VN
	315/70R22.5 GDR210+	18PR	156/150L(152/148M)	19.5	VN
	315/80R22.5 GDR210+	18PR	156/150L(154/150M)	20.5	VN



# VersaTour GDR220

Drive Tire For Regional Application



The GDR220 boasts a staggered-blocks tread pattern for powerful drive transmission and exceptional traction, reinforced shoulder ribs for durability, a wear-resistant formula for extended mileage, and high-density tread for superior wear and braking performance.

## A Lateral Five-Block Tread Design

The tread features five lateral blocks, increasing contact area while balancing wear resistance and grip performance.

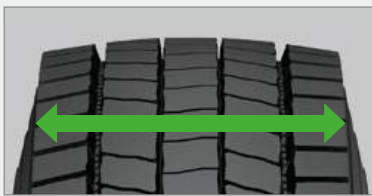


## B Central Tread Arrangement

The three central tread blocks are closely connected and staggered, ensuring high-speed performance while reducing driving vibrations.

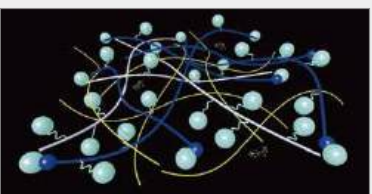
## C Widened Crown Design

The widened crown design provides a larger contact area, enhancing driving stability and grip.



## D Anti-Aging Compound

The formula incorporates enhanced rubber molecular chains to effectively slow down tire aging, extending its lifespan.



## E Classic Square Design

Ensures even distribution of tread pressure across the surface, with shoulder blocks connected by reinforcing ribs to reduce irregular wear.



## F Low Void Ratio for Fuel-Efficient Drive

Compared to similar products, the crown features a high-saturation design in the center, reducing fuel consumption at the drive axle during high-speed driving.



## G Stone Ejection Performance

The grooves on both sides of the crown feature stone-ejecting channels, effectively removing stones and dirt, significantly reducing damage caused by stone entrapment.

Inch	Size	PR	LI/SS	TD (mm)	Plant
17.5	205/75R17.5	14PR	124/122L	14.5	VN
	215/75R17.5	16PR	135/133L(128/126M)	14.5	VN
	235/75R17.5	18PR	143/141L(132/130M)	14.5	VN
19.5	265/70R19.5	18PR	143/141J(140/138M)	15.0	VN
	285/70R19.5	18PR	150/148K(146/144M)	15.5	VN



# VersaTour

## GTR311/GTR311N

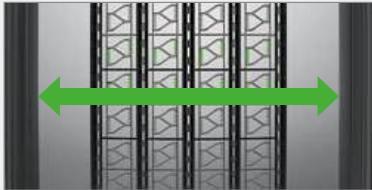
Premium Trailer Tire For Regional Application



The GTR311 offers superior wet grip, puncture resistance, and minimized shoulder wear for extended mileage. Its design for trailer positions ensures even pressure distribution, reduced rolling resistance, and fuel efficiency. Navigate all terrains confidently.

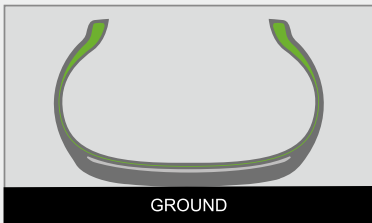
### A Widened Tread

Enhancing wear resistance and providing excellent stability during long-distance driving.



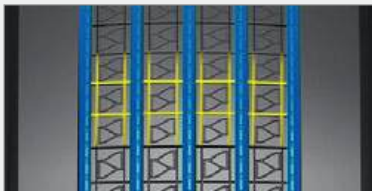
### B Carcass Contour

The newly designed carcass contour effectively reduces shoulder wear, extending the tire's lifespan.



### C Five-Groove Design

The grid-patterned grooves enhance drainage capability while effectively preventing lateral sliding during tire rotation.

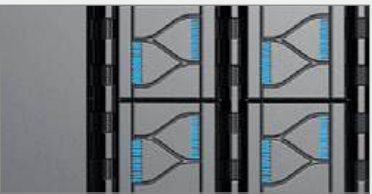


GTR311

GTR311N

### D Excellent Wet Traction

A dense distribution of steel plates across the four central ribs enhances the vehicle's resistance to hydroplaning, improving safety on slippery surfaces.

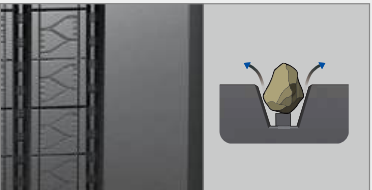


### E Noise Reduction Design

The optimized tread pattern minimizes noise during operation, enhancing driving comfort

### F Stone Ejector Design

The stone ejector feature at the bottom of the tread grooves reduces the risk of puncture damage from sharp objects in adverse conditions.



### G Low Rolling Resistance

The smooth shoulder design reduces rolling resistance, thereby improving fuel efficiency.

### H Good Heat Dissipation

The optimized shoulder structure lowers heat build-up in the shoulder area, enhancing durability for long-distance driving.

### I Robust Carcass Construction

The carcass structure UHT steel belts, ensuring the product can be retreaded multiple times.

Inch	Size	PR	LI/SS	TD (mm)	Plant
22.5	385/65R22.5 GTR311	24PR	164K	15.5	CN
	385/65R22.5 GTR311N	24PR	164K	15.5	VN



# VersaTour GTR321

Trailer Tire For Long Haul & Regional Application



The GTR321 features an innovative tread design with curved grooves for high-speed stability and stone ejection, an expansive wide tread for enhanced mileage, a robust carcass for extended durability, and streamlined shoulders to reduce fuel consumption.

## A Versatile Adaptability

The design features four zigzag grooves that ensure high-speed performance while accommodating regional transport environments, effectively adapting to varying road conditions during transit.



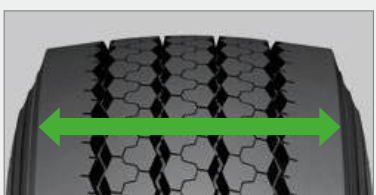
## B Wet Traction Performance

The sipe on the shoulders incorporate steel plates, effectively enhancing resistance to hydroplaning.



## C Wide Tread Design

The wide tread surface maximizes the contact area between the crown and the ground, improving durability and stability.



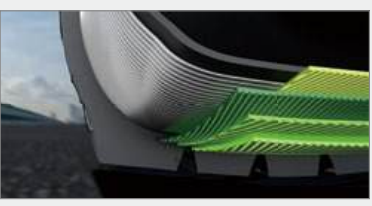
## D Low Rolling Resistance

The smooth surface on both sides, combined with a closed shoulder design, reduces rolling resistance during travel, thereby enhancing fuel efficiency.



## E Robust carcass Structure

The carcass UHT steel wires, ensuring a solid and durable construction that allows for multiple retreads.



## F Stone Ejector Design

The central two grooves feature a stone ejector design, preventing damage from stone and other foreign object intrusion.



Inch	Size	PR	LI/SS	TD (mm)	Plant
22.5	385/65R22.5	24PR	164K	16.5	VN



# The EnduraTour Series

The EnduraTour Series tires are built for both on-road and off-road performance, excelling in aggressive, uneven, and muddy terrains, and are ideal for carrying heavy loads at medium to slow speeds with frequent stops, offering exceptional durability and adaptability to diverse road conditions.



**EnduraTour**  
**GAM510**  
**GAM510+**

**EnduraTour**  
**GAM512**  
**GAM512HD**

**EnduraTour**  
**GDM610**



**EnduraTour**  
**GDM612**

**EnduraTour**  
**GDM613**

**EnduraTour**  
**GDX711**



# EnduraTour

## GAM510/GAM510+

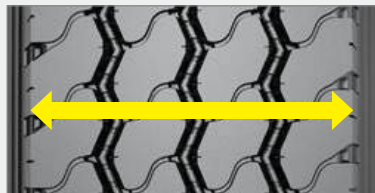
All-Position Tire For On & Off Road Application



The GAM510+ tire boasts a unique design for mixed terrain, featuring zigzag grooves for smooth urban to rural transitions. Its stone-ejection system protects against rough roads, while the open shoulder design reduces heat for speedy trips. S-shaped tread blocks enhance grip, offering stable and reliable driving.

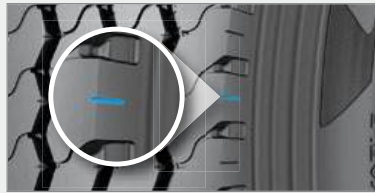
### A Widened Tread

The widened tread and optimized contact patch ensure more even pressure distribution across the crown, enhancing wear resistance and providing excellent stability during long-distance driving.



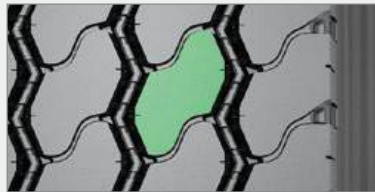
### B Optimized Shoulder Design

The shoulder features a small opening design, which maintains shoulder strength while reducing heat buildup, making it suitable for short-distance, high-speed driving.



### C Safety and Comfort

Enhanced braking performance: The S-shaped tread blocks improved the braking effectiveness of the tread, while reducing stopping distance.



### D Enhanced Sidewall Protection

The reinforced sidewall design reduces damage from scrapes and impacts.

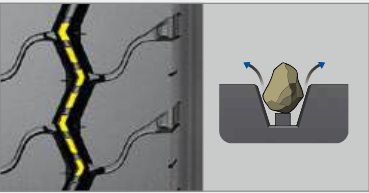


### E Wet Traction Design

Each tread block is reinforced with steel plates on both ends, effectively enhancing performance on wet surfaces.

### F Stone Ejector Design

Each of the three tread grooves is equipped with a stone ejector design, reducing the risk of puncture damage from sharp objects in adverse road conditions.



GAM510+

GAM510

Inch	Size	PR	LI/SS	TD (mm)	Plant
22.5	11R22.5 GAM510	16PR	148/145K	17.0	CN
	11R22.5 GAM510	18PR	149/146J	17.0	CN
	12R22.5 GAM510	18PR	152/149K	16.0	CN
	13R22.5 GAM510+	18PR	156/150K	17.5	VN
	13R22.5 GAM510	20PR	156/153K	18.0	CN
	295/80R22.5 GAM510+	18PR	154/149K	17.0	VN
	315/80R22.5 GAM510+	18PR	156/150L(154/150M)	16.5	VN
24	315/80R22.5 GAM510	20PR	156/153K	16.0	CN
	12.00R24 GAM510	20PR	160/156K	15.5	CN
	325/95R24 GAM510	22PR	162/160K	15.5	CN VN



# EnduraTour

## GAM512/GAM512HD

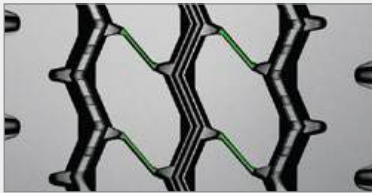
All-Position Tire For On & Off Road Application



The GAM512 GAM512HD features a zero-degree belt for durability on rough terrain and an M-shaped shoulder for continuous grip, excelling in mixed conditions. Its high-tensile steel cord offers exceptional load stability, while stone-ejecting grooves reduce damage, ensuring a reliable driving experience.

### A Continuous Central Rib Design

The central tread blocks are interconnected by ribs, providing exceptional straight-line stability and reducing the risk of drift during high-speed driving.



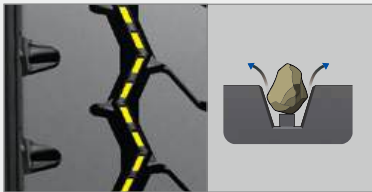
### B High Load Capacity

The high-strength bead design delivers excellent impact resistance and load-bearing performance on unpaved surfaces, ensuring safe driving.



### C Stone Ejector Technology

The grooves on both sides are equipped with raised stone-ejecting rubber strips, providing protection against damage from gravel and foreign objects in harsh conditions.



### D Innovative ZigZag Design

As the tread wears, the land-sea ratio decreases, increasing the contact area and extending the tire's usable life.

### E Semi open shoulder

Ensures grip on unpaved surfaces while dissipating heat generated by excessive flexing of the tire body during short-distance heavy load transportation, thereby extending tire lifespan.



### F Enhanced Versatility

The M-shaped shoulder design ensures continuous ground contact, enabling adaptability to mixed urban and rural road conditions and a variety of weather scenarios, including wet surfaces and light snow.

### G Reinforced Sidewall Protection

Strengthened sidewall structure prevents cuts and abrasions, enhancing the tire's durability and longevity.



### H Robust Casing Structure

Constructed with high-strength steel cords, the casing offers excellent deformation resistance under heavy loads, making it suitable for demanding short-distance heavy-duty transport.

Inch	Size	PR	LI/SS	TD (mm)	Plant
16	7.50R16LT GAM512HD	14PR	122/118K	12.5	CN
	10.00R20 GAM512	18PR	149/146K	15.0	CN
	10.00R20 GAM512HD	18PR	149/146K	15.0	CN
20	11.00R20 GAM512	18PR	152/149K	15.5	CN
	11.00R20 GAM512HD	18PR	152/149K	15.5	CN
	12.00R20 GAM512HD	22PR	158/155J	15.5	CN
	12.00R20 GAM512	18PR	154/151K	15.5	CN



# EnduraTour GDM610

Drive Tire For On & Off Road Application



The GDM610 truck driving wheel, featuring a unique tread formula for excellent cut resistance and chunking prevention on rough terrains. Its robust rim and thick bead design ensure stability under impact, while the high-strength carcass minimizes deformation under load, enhancing load-bearing capabilities. The lateral pattern provides superior traction in mud, offering reliable driving support for trucks.

## A V-Shaped Tread Design

The large “V” shaped tread pattern firmly grips the ground, delivering powerful driving force, making it especially suitable for use in harsh road conditions.

## B Multi-Directional Design

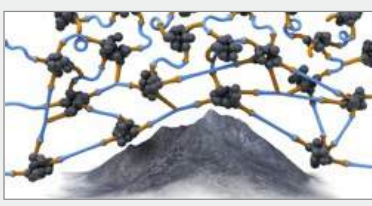
The tread blocks feature multi-directional sipes that quickly evacuate water, effectively improving wet traction and reducing the risk of skidding.

## C Excellent Braking Performance

The large block tread and deep grooves provide a stronger grip during braking, enhancing safety and control.

## D Cut-Resistant Tread Compound

Made with a specialized cut-resistant rubber compound, the tire reduces the risk of punctures from debris on unpaved roads, making it ideal for frequent short-distance transport.



## E Strong Tire Bead

The bead structure is designed for heavy-duty transport, ensuring stable performance under high-load conditions.



## F Robust Tire Construction

The tire features a high-strength steel body that can withstand impacts from rough terrain, ensuring long-lasting durability in harsh environments.

## G Involved for Rough Condition

The sturdy tire structure ensures the tire withstands high torque demands in short-distance transport under harsh conditions, preventing the tire from excessive deformation.

## H Wide Tread Design

The increased tread area enhances load distribution, reduces localized wear, and extends the tire's service life.

Inch	Size	PR	LI/SS	TD (mm)	Plant
16	7.50R16LT	14PR	122/118K	14.5	CN
20	10.00R20	18PR	149/146K	17.0	CN
24	12.00R24	20PR	160/156K	19.0	CN
	325/95R24	22PR	162/160K	19.0	CN VN



# EnduraTour GDM612

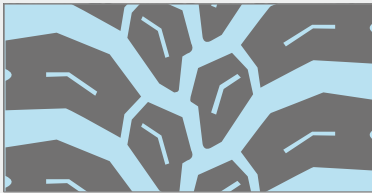
Drive Tire For On & Off Road Application



Meet the GDM612 drive wheel, featuring an optimized structure for balanced force distribution and increased durability. Its unique tread design ensures efficient traction and puncture resistance, while the directional pattern enhances water evacuation and fuel efficiency, making it the ideal choice for reliable truck performance.

## A Unidirectional Tread Design

The tread pattern is designed in a single direction, providing optimal traction and drainage performance.



## B Enhanced Traction

The deep grooves improve off-road performance, providing excellent grip on loose surfaces, and performing exceptionally well on gravel, dirt, and other unpaved terrains

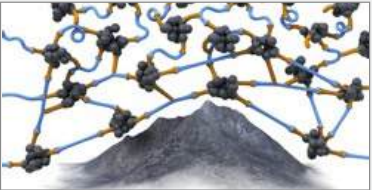
## C Increased Bead Strength

Enhanced bead strength can withstand the high torque experienced by heavy trucks during cornering.



## D Puncture Resistance

The large tread blocks and cut-resistant compound prevent road debris from penetrating the tire.



## E Robust carcass Construction

The application of UHT steel belts creates a sturdy tire structure suitable for short-distance heavy-load transportation needs.



## F Slip Resistance

The unidirectional tread design offers better lateral stability, reducing the risk of slipping.

## G Reinforced Bead Design

The strengthened bead accommodates high loads while ensuring driving stability.



Inch	Size	PR	LI/SS	TD (mm)	Plant
22.5	11R22.5	16PR	148/145K	22.5	CN
	11R22.5	18PR	COMING SOON		
	13R22.5	18PR	156/150K	20.0	VN
	295/80R22.5	18PR	152/149K	17.0	VN
	315/80R22.5	20PR	156/153K	21.5	CN VN



# EnduraTour GDM613

Drive Tire For On & Off Road Application



The GDM613 features a robust tread with reinforced ribs for superior chunking resistance and impact durability, ensuring powerful grip and seamless travel across varied terrains. Ideal for enduring tough conditions.

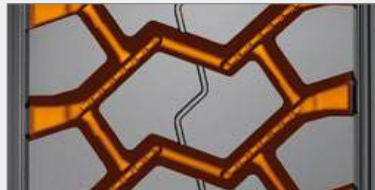
**A Classic Off-Road Pattern Design**

The classic pattern design is ideal for short-distance transport, helping reduce transfer costs.



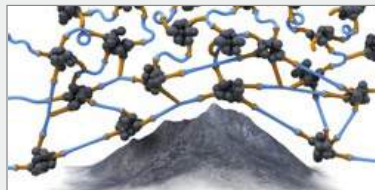
**B Deep Tread Design**

The tread features deep and wide grooves that enhance grip on unpaved roads, ensuring excellent performance across various terrains such as rocks, dirt, and gravel.



**C Tear-Resistant Compound**

The tread is made with a tear-resistant compound and a reinforced tread design to reduce the risk of early damage from debris in harsh environments.



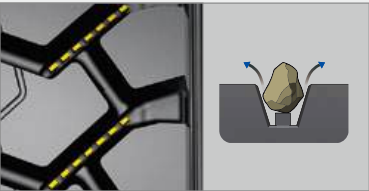
**D Strong Braking Performance**

The tread design increases grip during braking, shortening stopping distances and enhancing safety.



**E Stone Ejection Function**

The tread grooves are equipped with stone ejectors that reduce damage to the grooves from debris.



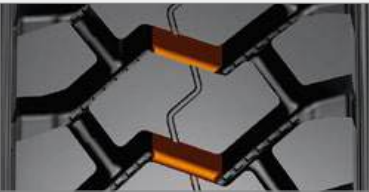
**F Reinforced Bead Design**

The bead is specially reinforced to improve tire durability in harsh industrial and mining environments.



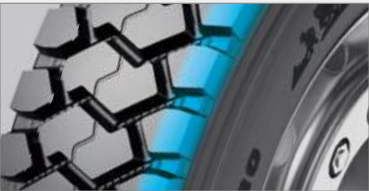
**G Adaptability to Complex Terrains**

The center section of the tread features a large S-shaped pattern with reinforcing ribs, making it suitable for mines, quarries, and other complex terrains.



**H Strong Shoulder Design**

The robust shoulder tread blocks enhance stability during turns, reducing the risk of side slip.



**I Impact Resistance**

The tire features a high-strength steel structure, which effectively absorbs shocks from the road surface, minimizing damage to vehicles and cargo while improving driving stability.

Inch	Size	PR	LI/SS	TD (mm)	Plant
16	7.50R16LT	14PR	122/118G	14.5	CN
20	12.00R20	18PR	154/151F	23.5	CN
	12.00R20	22PR	158/155F	23.5	CN



# EnduraTour GDX711

Drive Tire For Off Road Application



The GDX711 boasts a symmetrical "arrow" pattern for enhanced traction and a reinforced bead for increased load capacity. Its robust midsection and groove bottom design offer superior rigidity and debris resistance, ideal for challenging terrains.

### A High-Strength Casing Design

The casing is constructed with high-strength steel wire materials to withstand impacts from uneven terrain, delivering exceptional impact resistance in harsh environments.

### B Specialized Tread Design

The large interlocking tread blocks enhance grip, efficiently transmitting traction and braking forces.

### C Tear-Resistant Design

Reinforcement ribs connect the tread blocks, effectively countering sharp stones and debris on rough terrain that could cause tread tears.



### D Optimized Tread Compound

A cut-resistant rubber compound ensures prolonged service life under harsh mining conditions.



### E High Load-Bearing Capacity

The optimized tire contour combined with high-strength steel wires fortifies the casing structure, making it robust enough for mining operations with limited turning spaces, resisting significant torque and deformation.

### F Enhanced Bead Structure

A specially designed bead structure improves durability and installation stability under complex mining road conditions.

### G Reliable Braking Performance

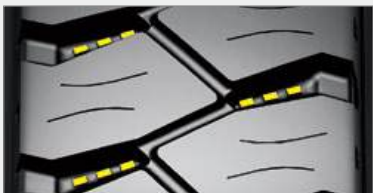
Large tread blocks provide dependable braking performance in mining environments, especially on downhill slopes, enhancing vehicle safety

### H Sidewall Protection Layer

Thickened sidewalls create a protective layer to prevent cuts and damage from sharp rocks and other obstacles.

### I Stone-Ejector Design

Rubber ejector blocks at the base of the transverse grooves reduce punctures caused by rocks, gravel, and other challenging terrains.



Inch	Size	PR	LI/SS	TD (mm)	Plant
16	10.00R20	18PR	149/146F	21.5	CN
	11.00R20	16PR	150/147F	23.0	CN
20	11.00R20	18PR	152/149F	23.0	CN
	12.00R20	18PR	154/151F	23.5	CN
	12.00R20	22PR	158/155F	23.5	CN



**GREENTOUR** Reference Chart

Sizes	RouteTour									VersaTour								EnduraTour							
	GSL910	GSL910N	GSL920	GSL921	GDL810	GDL812	GDL821	GTL310	GTL320	GSR110	GAR111	GDR210	GDR210+	GDR220	GTR311	GTR311N	GTR321	GAM510	GAM510+	GAM512	GAM512HD	GDM610	GDM612	GDM613	GDX711
7.50R16LT											•										•	•		•	
9.5R17.5										•															
205/75R17.5										•				•											
215/75R17.5										•				•											
235/75R17.5										•				•											
245/70R17.5										•															
225/70R19.5										•															
245/70R19.5										•															
265/70R19.5										•				•											
285/70R19.5										•				•											
435/50R19.5								•																	
445/45R19.5								•																	
11R22.5				•		•			•	•		•						•					•		
12R22.5										•								•							
13R22.5																		•	•				•		
255/70R22.5										•															
275/70R22.5			•							•															
275/80R22.5										•		•													
295/60R22.5							•																		
295/75R22.5				•		•			•	•															
295/80R22.5			•		•					•			•						•				•		
315/60R22.5			•				•																		
315/70R22.5		•	•		•		•						•												
315/80R22.5	•	•	•		•		•			•		•	•					•	•				•		
385/55R22.5			•																						
385/65R22.5			•					•							•	•	•								
11R24.5				•		•				•															
10.00R20																				•	•	•			•
11.00R20																				•	•				•
12.00R20																				•	•			•	•
12.00R24																		•				•			
325/95R24																		•				•			



## Limited Warranty

## TRUCK TIRES

This Limited Warranty/Adjustment Policy provides tire replacement under specified conditions. This policy applies to GREENTOUR radial truck tires used in normal service displaying warrantable conditions. Tires that become unserviceable or wear out because of neglect or mistreatment are excluded from the GREENTOUR Tires Warranty coverage.

## WARRANTY ELIGIBILITY

- This warranty applies to any replacement truck tire operated in normal service use bearing the GREENTOUR brand name and complete Department of Transportation serial identification number.
- All eligible tires are covered against defects in workmanship and materials under this warranty. Tires are covered by this warranty for the life of the original usable tread depth (The original useable tread is determined by measuring the depth on the tread of a new tire to the top of the tread wear indicator bars molded at 1.6mm) within 36 months from the date of manufacture.
- This warranty applies only to the original purchaser, and is not transferrable to any other party. The warranty time period does not represent the expected service life for tires covered by this warranty.

## WHAT IS WARRANTED

Tires that become unserviceable within 36 months of the date of manufacture, for reasons other than those stated below, will be replaced under this warranty.

## WHAT IS NOT WARRANTED

Tires that have become unserviceable for the following reason:

- Improper repairs or repairs that have failed. Will void this Limited Warranty.
- Improper maintenance which can include: improper inflation or other maintenance abuses.
- Improper application or operation such as speeding, improper tire size and/or specification.
- Improper mounting/dismounting procedures, tires/wheel assembly imbalance.
- Mechanical irregularities in the vehicle or wheel, such as bent wheel assemblies, misalignment, worn or faulty components.
- Accident, corrosion, vandalism, fire or damages caused by contamination from petroleum or other chemical products.

- Irregular tread wear, rapid tread wear or worn-out tread (remaining tread depth less than 1.6mm) is not covered under the GREENTOUR Tires Limited Warranty.

Road hazard injuries or damages caused by obstacles or debris, such as cuts, punctures (whether repairable or not), snags, bruises, tears, abrasions or impact breaks (whether repairable or not), etc.

## ADDITIONAL EXCLUSIONS

- Materials added such as fillers, sealants, balancing substances and external tire treatments. If the added material is the cause of a failure the warranty will be deemed as void.
- Tires submitted for ride disturbance complaints after 2mm tread wear.
- Tires purchased as used.
- Tires branded by GREENTOUR Tires which denote special classification at the time of purchase, such as “NA” (non-adjustable), or tires altered by notching or buffing.
- Tires used on vehicles in racing or special applications.
- Tires rendered unserviceable due to snow chains or studs.
- Flat spotting due to improper storage or caused by brake lock.

## ADJUSTMENT POLICY

When the original useable tread is worn 1.6mm or less, and a warrantable condition is found, the tire will be reimbursed at 100% of the current GREENTOUR purchasing price. When a tire has worn more than 1.6mm and a warrantable condition is found, GREENTOUR will reimburse the tire on a prorated basis.

GREENTOUR will multiply the % of leftover usable tread by the current GREENTOUR purchasing price at the time the claim is presented to GREENTOUR.

$$\text{Payment} = (\text{Useable remaining tread depth} / \text{Usable original tread depth}) * \text{current Purchasing price}.$$

## Note

This image shows a full page of white paper with light gray horizontal ruling lines. The lines are evenly spaced and run across the width of the page, providing a template for handwriting practice or note-taking. There are no margins, text, or other markings present.



## Note

[illegible]

## Note

[illegible]



***GREENTOUR***

***GREENTOUR***

Add: Building No. 5, Lane 388 Daduhe Road, Shanghai 200062, China

Tel: (+86) (21) 6295 5670

E-mail: [greentourtire@greentourtire.com](mailto:greentourtire@greentourtire.com)

[www.greentourtire.com](http://www.greentourtire.com)

Version 5.6.3