

GREENTOUR

TRUCK & BUS RADIAL TIRE CATALOGUE



GREENTOUR

Tel: (+86) (21) 6295 5670

E-mail: greentourtire@greentourtire.com

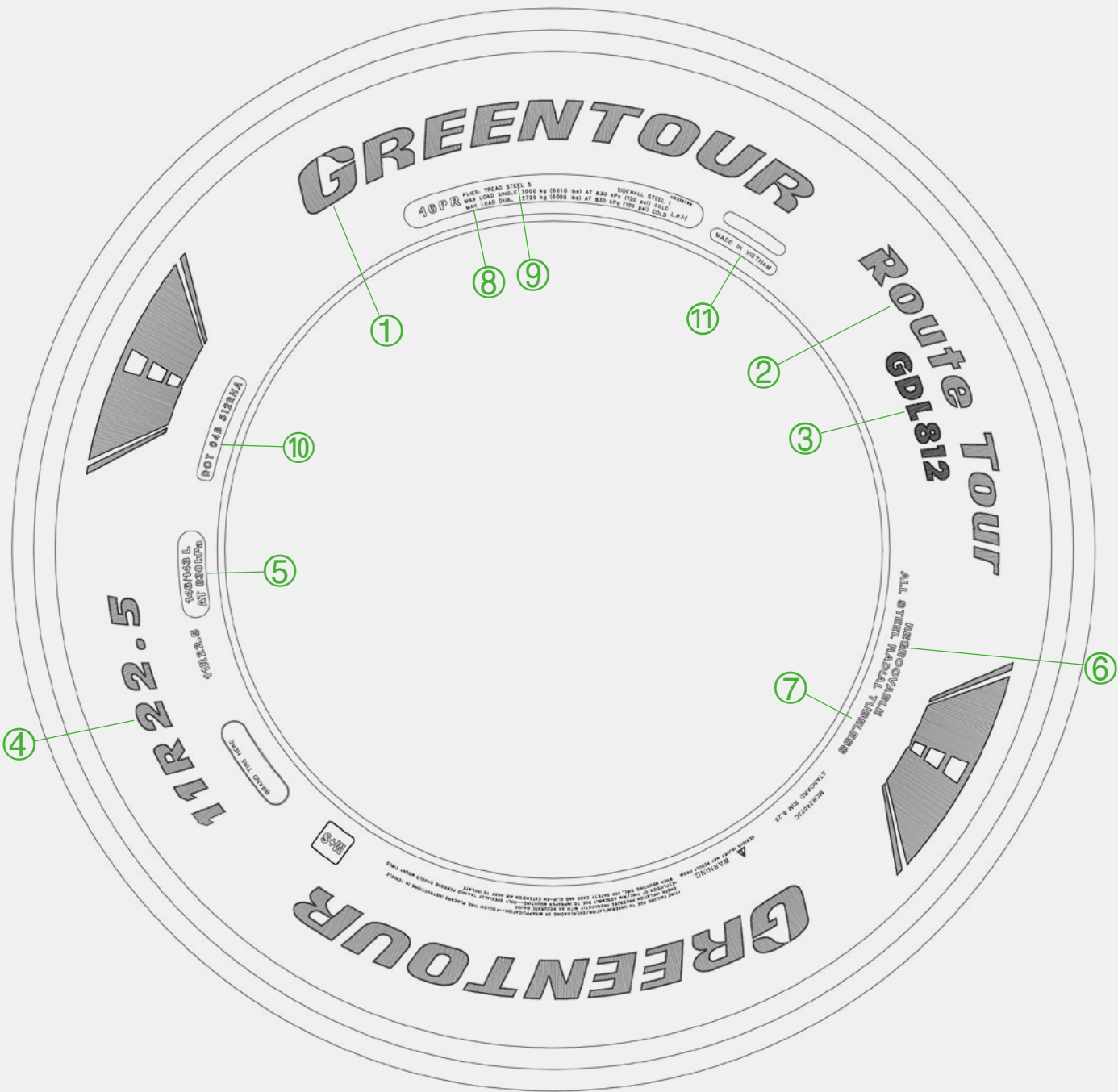
www.greentourtire.com

Version 5.6.2 US

1



Sidewall Markings



- ① GREENTOUR brand

② RouteTour series

③ Pattern name

④ Size designation
11 = tire nominal section width in inch
R = radial construction
22.5 = nominal rim diameter in inch

⑤ Service description
Consisting of
146 = load index for single fitment
143 = load index for dual fitment
L = speed symbol

⑥ Regroovable
The manufacturer has designed the tire for regrooving
- ⑦ Tube type

⑧ Load designation
For single/dual fitment and indication of max. inflation pressure in psi (1 bar = 14.5 psi)

⑨ Data as per safety standards on inner construction or number of plies, in this case, **Tread:** under the tread, there are several steel cord plies (including casing)
Sidewall: viewed from the side there is one steel cord ply (in this case the casing ply)

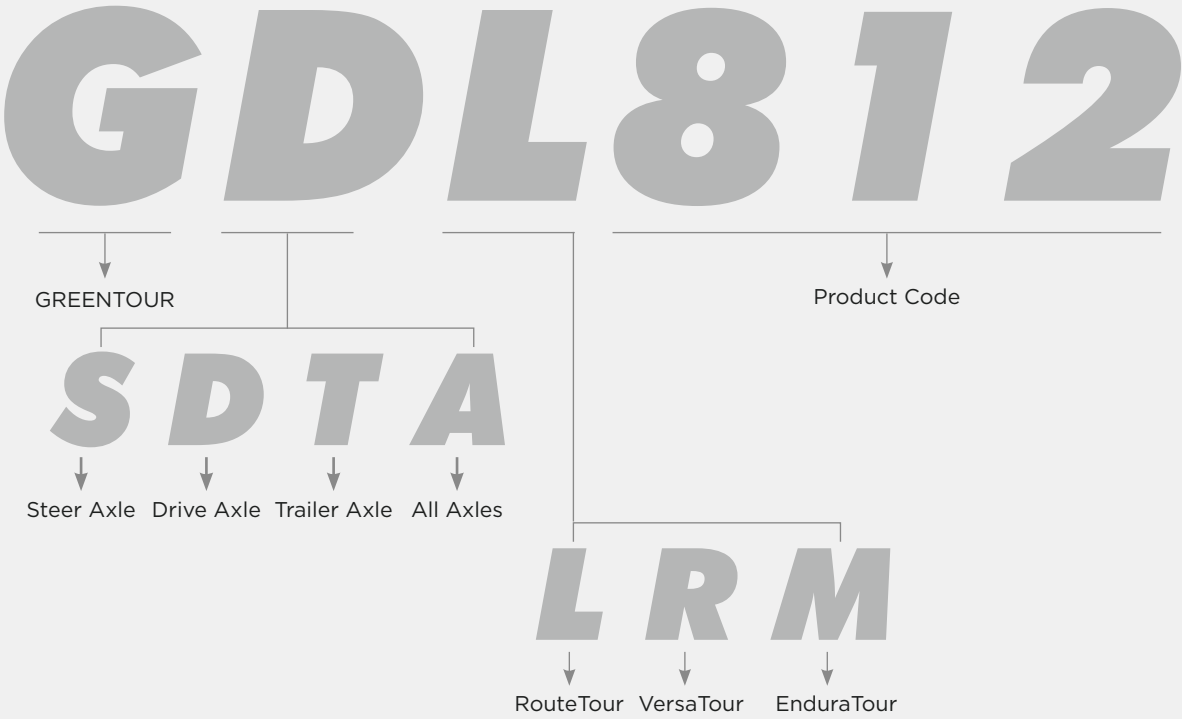
⑩ DOT
= U.S. Department of Transportation (responsible for tire safety standards)
Tire complies with requirements set out in US Reg. FMVSS 119

⑪ Country of origin

Application

SERIES	APPLICATION
RouteTour	The RouteTour Series tires are engineered for long-distance travel and are characterized by maintaining a steady speed with minimal need for braking or accelerating. The journey takes place on a well-maintained road surface with fewer curves, allowing for a smoother and more consistent driving experience.
VersaTour	The VersaTour Series tires are designed for extended trips that involve frequent stops, speed fluctuations, and directional changes. The roads are well-paved but include curves and occasionally rough surfaces, offering a combination of manageable and challenging driving conditions.
EnduraTour	The EnduraTour Series tires are built for both on-road and off-road performance, excelling in aggressive, uneven, and muddy terrains, and are ideal for carrying heavy loads at medium to slow speeds with frequent stops, offering exceptional durability and adaptability to diverse road conditions.

Tire Naming System



Tire Markings

Nominal aspect ratio or series (H/S*100)					
295/75	R	22.5	146/143	L	16PR
Nominal section width (mm/Inches)	Construction	Nominal rim diameter (Inches)	Loading index (single / dual)	Speed symbol	Ply rating. Indicates different versions (load capacity/inflation pressure) of tires having the same size designation
11	R	22.5	146/143	L	16PR

Tire Range

RouteTour

P.07 — P.20

RouteTour
GSL920

RouteTour
GSL921

RouteTour
GDL821

RouteTour
GDL812

RouteTour
GTL320

VersaTour

P.21 — P.26

VersaTour
GSR110

VersaTour
GDR210

VersaTour
GDR220

EnduraTour

P.27 — P.32

EnduraTour
GAM510+

EnduraTour
GDM612

The RouteTour Series

The RouteTour Series tires are engineered for long-distance travel and are characterized by maintaining a steady speed with minimal need for braking or accelerating. The journey takes place on a well-maintained road surface with fewer curves, allowing for a smoother and more consistent driving experience.



RouteTour
GSL920

RouteTour
GSL921

RouteTour
GDL821



RouteTour
GDL812

RouteTour
GTL320

RouteTour **GSL920**

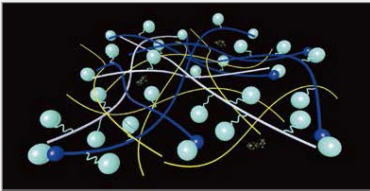
Steer/trailer tire for long haul application



The **GSL920** features an innovative carcass structure for optimal ground contact, reinforced crown steel inserts for enhanced grip, an advanced formula for wear resistance and fuel efficiency, and an efficient groove design for debris protection on diverse routes.

A Wear-Resistant Tread Compound

A unique wear-resistant formula designed specifically for long-distance, high-speed transportation, with an extremely low wear rate, extending the tire's lifespan.



B Continuous Central Rib

Improves straight-line stability and directional control, making it ideal for long-distance highway driving.

C Four Main Groove Design

The classic four-groove pattern is specifically designed for long-distance driving, providing excellent handling for straight-line stability. Its superior water drainage capabilities reduce the risk of hydroplaning during rainy conditions.



D Enhanced Lateral Stability

Reinforced carcass structure and specially strengthened shoulders improve lateral stability during high-speed cornering.



E Stone Ejection Prevention Design

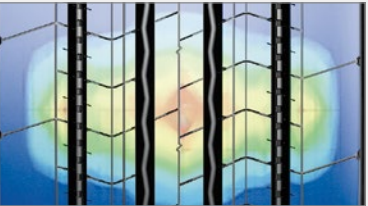
The straight grooves on both sides are equipped with stone ejectors to reduce damage from trapped stones. The two central grooves feature an S-shaped design that automatically expels dirt and stones during driving, providing excellent self-cleaning capabilities.

F High Retreadability

The casing design allows for multiple retreads, extending the overall tire lifespan and reducing long-term costs.

G Optimizing The Tire Tread Profile

Adjusting the crown structure, optimizing the footprint, ensuring even distribution of ground contact pressure, enhancing tire wear resistance, and extending its lifespan.



Size	PR	Load Range	LI/SS	Tread Depth (32nds)
295/80R22.5	18PR	J	154/149M	20
315/80R22.5	18PR	J	156/150L (154/150M)	20

RouteTour **GSL921**

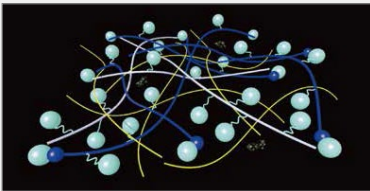
Steer tire for long haul & regional application



The GSL921 features enhanced shoulder for reduced uneven wear, reinforced pattern design for superior traction, an intuitive wear indicator for easy maintenance, and an optimized carcass structure for balanced stress and improved safety.

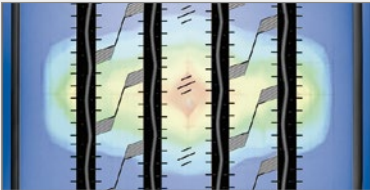
A Optimized Shoulder Formula

The distribution of shoulder materials is optimized to reduce heat buildup, preventing abnormal shoulder wear.



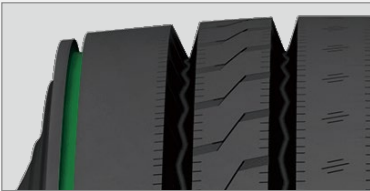
B Even Tread Pressure Distribution

The optimized tread design ensures uniform ground contact pressure, resulting in a smooth wear surface and increased mileage.



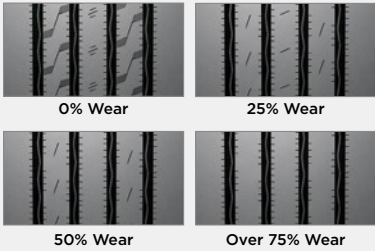
C Decoupling Grooves

Annular grooves on both shoulders effectively prevent uneven shoulder wear, extending the tire's mileage.



D Wear Indicator

Evenly distributed three wear indicators on the central ribs provide a clear visual cue as the tread wears, signaling timely tire replacement to ensure driving safety.



E Low Rolling Resistance

Smooth shoulder design reduces friction between the tire and the road, improving fuel efficiency and lowering operational costs.

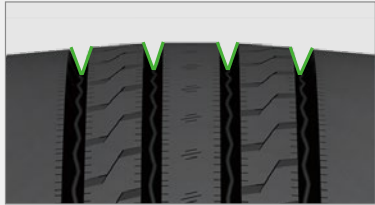


F Strong Retreadability

The high-quality casing structure supports multiple retreads, further extending the tire's lifespan.

G Excellent Self-Cleaning Performance

The four main grooves feature an S-shaped design with V-shaped inclined walls, allowing trapped stones and mud to be expelled during high-speed rotation, providing effective self-cleaning.



Size	PR	Load Range	LI/SS	Tread Depth (32nds)
295/75R22.5	16PR	H	146/143M	18
11R22.5	16PR	H	146/143M	18
11R24.5	16PR	H	149/146M	18

RouteTour GDL821

Drive tire for long haul application



The GDL821 combines a unique unidirectional tread for optimal grip on wet and dry surfaces, with reinforced shoulders and a specialized formula for enhanced durability and fuel efficiency. Optimized contour ensures top high-speed performance and retreadability.

A Unique Unidirectional Design

The tread pattern is designed for single-directional flow, providing optimal traction and drainage performance, ensuring good grip on both dry and wet surfaces.

B Reinforced Shoulder Design

Independent tread patterns on both shoulders are connected by strengthening ribs, ensuring tire drive force while preventing tread tearing due to excessive deformation during heavy acceleration, thus enhancing tire lifespan.



C Reinforced Casing Structure

Built with UHT steel cords for a robust structure, the tire ensures enhanced durability and damage resistance while supporting multiple retreads, effectively reducing



D Wear-Resistant Compound

Unyielding wear-resistant compound that reduces wear during prolonged high-speed driving, extending tire lifespan and providing excellent mileage performance.



E Wide Contact Area

The wide tread design increases the TIRE's ground contact area, distributes load pressure evenly, reduces tire wear, and enhances mileage.

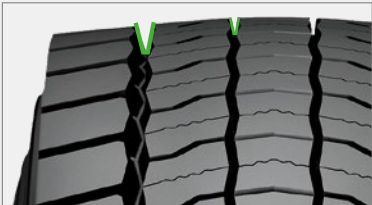
F Unique Tread Block Design

Five large tread blocks are arranged laterally, with shoulder and central blocks staggered. This alternating ground contact reduces TIRE vibration during driving, enhancing ride stability.



G Self-Cleaning Capability

The "V" shaped tread grooves automatically expel stones, mud, and other debris during driving, keeping the tread surface clean.



Size	PR	Load Range	LI/SS	Tread Depth (32nds)
315/80R22.5	18PR	J	156/150L (154/150M)	22

RouteTour GDL812

Drive tire for long haul & regional application



The ultimate choice for long-haul driving. With independent tread blocks and four zigzag grooves, it delivers exceptional traction. Its wide tread provides superior grip, while the four-layer belt structure enhances durability and even wear. Engineered for stability and safety at high speeds, its deep tread design ensures unmatched longevity.

A Enhanced Sidewall Protection

The tire features reinforced sidewalls that offer extra protection against abrasions and curb damage, extending the tire's life and improving reliability in challenging road conditions.



B Robust Casing Structure

The GDL812 is designed with a robust casing structure that withstands the rigors of long-haul applications, offering protection against impact damage and punctures. This durability ensures that the tire can handle the demands of extensive highway use.



C Wide-Tread Design

The GDL812 features a 9.5-inch wide-tread, providing enhanced stability and improved traction on various road conditions. This design maximizes contact with the road making it suitable for long-haul and regional applications.

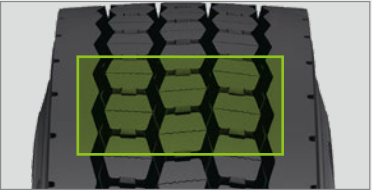


D Heat Dissipation Design

The GDL812 is engineered with a heat dissipation design that reduces the risk of blowouts or other heat-related failures. This feature is crucial for maintaining tire integrity during long hauls, particularly in hot climates.

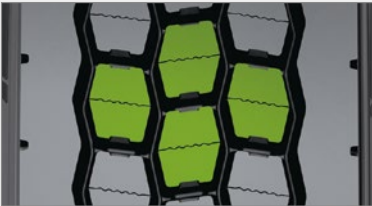
E Uniform Tread Wear

The tread design is optimized for even wear across the entire tread surface, preventing premature or uneven wear patterns. This feature maximizes mileage and extends the tire's lifespan, making it a cost-effective solution for long-haul operations.



F Hexagonal Tread Pattern

The unique hexagonal tread pattern enhances stability by providing a larger contact area with the road. This design improves control, especially during high-speed driving, and reduces the risk of slippage.



G Reinforced Bead Construction

The tire's reinforced bead construction ensures that it remains secure and stable, even under heavy loads or during long-distance travel. This enhances the tire's overall performance, providing peace of mind for fleet operators.



Size	PR	Load Range	LI/SS	Tread Depth (32nds)
295/75R22.5	16PR	H	146/143L	28
11R22.5	16PR	H	146/143L	28

RouteTour GTL320

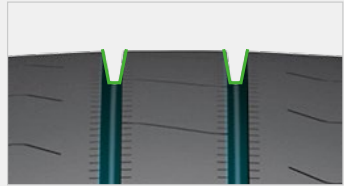
Trailer tire for long haul & regional application



The GTL320 features innovative anti-wear shoulder, a specialized trailer wheel design for fuel efficiency, reinforced tread for superior safety, and streamlined smooth shoulder to increase mileage and reduce rolling resistance.

A Self-Cleaning Grooves

The four straight grooves feature a “V” design, allowing embedded stones and debris to be ejected during high-speed rotation, protecting the tire crown from damage.



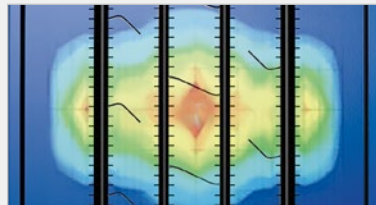
B Low Rolling Resistance

Smooth sides with a closed-shoulder design reduce the tire’s rolling resistance, improving fuel efficiency and lowering transportation costs.



C Balanced Wear Design

The crown structure is adjusted to optimize the contact footprint, distributing tread pressure evenly. This ensures more uniform wear on the crown, reduces the need for replacements due to uneven wear, and extends the tire’s lifespan.



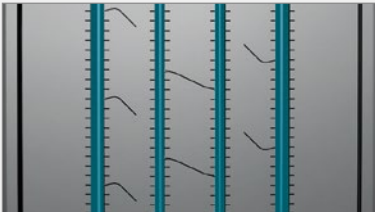
D Reinforced Bead Design

The enhanced bead design reduces the risk of damage caused by high torque during casing deformation when the vehicle frequently turns or changes lanes, improving tire stability.



E Straight Groove Design

The four straight grooves feature a “V” design, allowing embedded stones and debris to be ejected during high-speed rotation, protecting the tire crown from.



F Retreadable

UHT steel cords create a more durable casing structure, suitable for multiple retreads, reducing tire replacement costs for long-haul trailers.

Size	PR	Load Range	LI/SS	Tread Depth (32nds)
295/75R22.5	14PR	G	144/141M	11
11R22.5	14PR	G	144/142M	12

The VersaTour Series

The VersaTour Series tires are designed for extended trips that involve frequent stops, speed fluctuations, and directional changes. The roads are well-paved but include curves and occasionally rough surfaces, offering a combination of manageable and challenging driving conditions.



VersaTour
GSR110

VersaTour
GDR210

VersaTour
GDR220

VersaTour GSR110

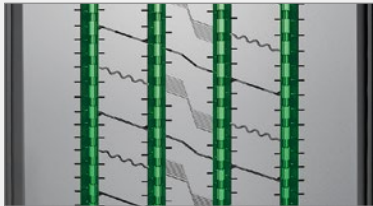
Steer/trailer tire for regional application



The GSR110 tire features a pattern design with fine steel chips to enhance wet grip and reduce skidding in rain. Its stone-ejection technology minimizes cracking, extending lifespan. A special compound reduces rolling resistance, and smooth shoulders provide stability at high speeds, preventing uneven wear.

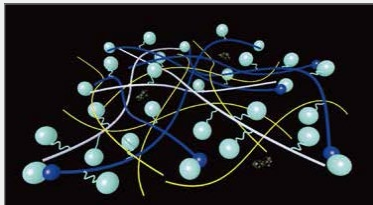
A Optimized Main Groove Design

Reduces lateral tire sliding during driving, enhancing handling performance in complex road conditions, and features stone ejection design to prevent debris from getting lodged, minimizing tread damage.



B High Heat Resistance

Utilizing a special rubber compound, the tire offers excellent heat resistance during prolonged driving, reducing the risk of overheating and ensuring safety.



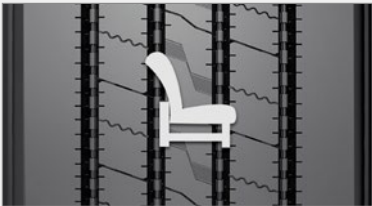
C Wear-Resistant Compound

Utilizing a unique formulation that enhances wear resistance and cut protection, extending tire lifespan, making it suitable for prolonged use in harsh conditions.



D High Comfort

The tread design effectively reduces vibrations and noise during driving, enhancing driver comfort, making it especially suitable for long-haul transportation.



E Robust And Durable

Featuring a reinforced casing structure that enhances impact resistance and puncture protection, adapting to various road conditions and providing a longer lifespan.



F Uniform Wear Characteristics

The tread design ensures even wear, reducing rapid wear caused by deformation during driving, which helps extend the overall lifespan of the tire.

Size	PR	Load Range	LI/SS	Tread Depth (32nds)
205/75R17.5	14	G	124/122M	16
215/75R17.5	16	H	135/133L (128/126M)	16
235/75R17.5	18	J	143/141L (132/130M)	16
245/70R17.5	18	J	143/141K	16
225/70R19.5	14	G	128/126L	16
245/70R19.5	18	J	144/142J (136/134M)	16
265/70R19.5	18	J	143/141J (140/138M)	17
285/70R19.5	18	J	150/148K (146/144M)	16
255/70R22.5	16	H	140/137M	17
295/75R22.5	14	G	144/141L	20
295/75R22.5	16	H	146/143L	20
11R22.5	16	H	146/143M	20

VersaTour GDR210

Drive Tire For Regional Application



The GDR210 drive tire, featuring a block pattern design and six independent sections, enhances grip and power transfer. Lateral sipes in each block reduce wear, and its wear-resistant formula extends mileage. Reinforced with high-strength steel, it minimizes deformation for reliable traction. GDR210: durability for your journey.

A Stone Ejection Design

The tread blocks are optimized with angled designs and a unidirectional pattern, enabling the expulsion of trapped stones and providing excellent self-cleaning capabilities.

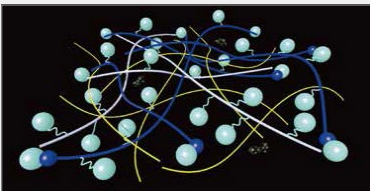


B Reinforced Tread Blocks

The central crown features independent hexagonal tread blocks complemented by lateral grooves, enhancing exceptional grip, especially on wet and muddy surfaces.

C Tear-Resistant Tread Design

The specially formulated tread enhances tear resistance, extending the tire's lifespan under harsh conditions.



D Reinforced Strengthened

The bead design is reinforced to ensure a tight fit between the tire and the rim during vehicle power output, enhancing driving safety.



E Reinforced Block Connectors

The tread blocks are interconnected with reinforcing ribs, reducing the flexing of individual blocks under load and minimizing feathering wear.

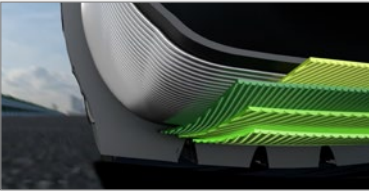


F Effective Heat Dissipation Design

Grooves between the tread blocks aid in rapid heat dissipation, ensuring the crown maintains durability during prolonged driving.

G Retreadability

This tire is designed with retread potential in mind, featuring a sturdy and durable construction suitable for multiple retreads, thereby extending its lifespan.



Size	PR	Load Range	LI/SS	Tread Depth (32nds)
275/80R22.5	16PR	H	149/146L	25

VersaTour GDR220

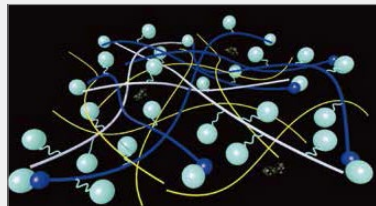
Drive tire for regional application



The GDR220 boasts a staggered-blocks tread pattern for powerful drive transmission and exceptional traction, reinforced shoulder ribs for durability, a wear-resistant formula for extended mileage, and high-density tread for superior wear and braking performance.

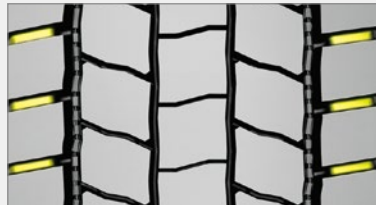
A Anti-Aging Compound

The formula incorporates enhanced rubber molecular chains to effectively slow down tire aging, extending its lifespan.



B Classic Square Design

Ensures even distribution of tread pressure across the surface, with shoulder blocks connected by reinforcing ribs to reduce irregular wear.



C High-Density Steel Belt Layer

The tire features a high-density steel belt layer that ensures load-bearing capacity across all sections, making it suitable for various complex road conditions.



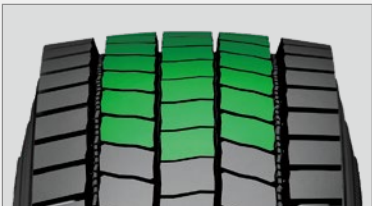
D Lateral Five-Block Tread Design

The tread features five lateral blocks, increasing contact area while balancing wear resistance and grip performance.



E Low Void Ratio for Fuel-Efficient Drive

Compared to similar products, the crown features a high-saturation design in the center, reducing fuel consumption at the drive axle during high-speed driving.



F Stone Ejection Performance

The grooves on both sides of the crown feature stone-ejecting channels, effectively removing stones and dirt, significantly reducing damage caused by stone entrapment.



Size	PR	Load Range	LI/SS	Tread Depth (32nds)
205/75R17.5	14	G	124/122L	18
215/75R17.5	16	H	135/133L (128/126M)	18
235/75R17.5	18	J	143/141L (132/130M)	18
265/70R19.5	18	J	143/141J (140/138M)	19
285/70R19.5	18	J	150/148K (146/144M)	20

The EnduraTour Series

The EnduraTour Series tires are built for both on-road and off-road performance, excelling in aggressive, uneven, and muddy terrains, and are ideal for carrying heavy loads at medium to slow speeds with frequent stops, offering exceptional durability and adaptability to diverse road conditions.



EnduraTour
GAM510⁺

EnduraTour
GDM612

EnduraTour GAM510+

All-position tire for on & off road application



The GAM510+ tire boasts a unique design for mixed terrain, featuring zigzag grooves for smooth urban to rural transitions. Its stone-ejection system protects against rough roads, while the open shoulder design reduces heat for speedy trips. S-shaped tread blocks enhance grip, offering stable and reliable driving.

A Safety and Comfort

Enhanced Braking Performance: The S-shaped tread blocks improved the braking effectiveness of the tread, while reducing stopping distance.



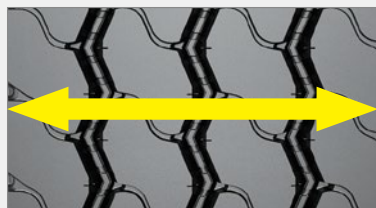
B Enhanced Sidewall Protection

The reinforced sidewall design reduces damage from scrapes and impacts.



C Widened Tread

The widened tread and optimized contact patch ensure more even pressure distribution across the crown, enhancing wear resistance and providing excellent stability during long-distance driving.



D High Impact Resistance

The reinforced tire structure, combined with high-strength steel belts enhances load capacity, and protects the tire from potential impact damage.

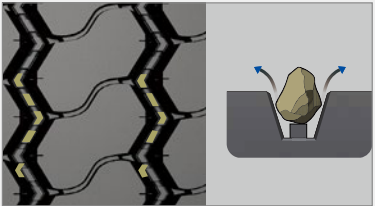


E Optimized Crown Rigidity

The crown is reinforced with high-strength steel, enabling it to withstand impacts from uneven, unpaved roads during regional transportation.

F Stone Ejector Design

Each of the three tread grooves is equipped with a stone ejector design, reducing the risk of puncture damage from sharp objects in adverse road conditions.



Size	PR	Load Range	LI/SS	Tread Depth (32nds)
315/80R22.5	18	J	156/150L (154/150M)	21

EnduraTour GDM612

Drive tire for on & off road application



Meet the GDM612 drive wheel, featuring an optimized structure for balanced force distribution and increased durability. Its unique tread design ensures efficient traction and puncture resistance, while the directional pattern enhances water evacuation and fuel efficiency, making it the ideal choice for reliable truck performance.

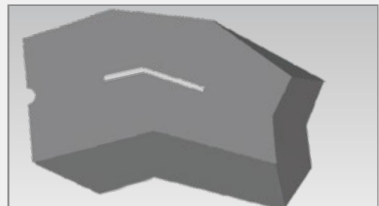
A Unidirectional Tread Design

The tread pattern is designed in a single direction, providing optimal traction and drainage performance.



B Enhanced Traction

The deep grooves improve off-road performance, providing excellent grip on loose surfaces, and performing exceptionally well on gravel, dirt, and other unpaved terrains.



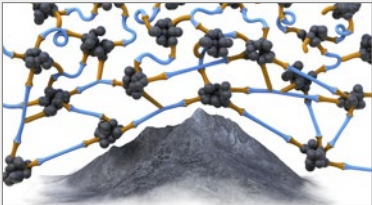
C Increased Bead Strength

Enhanced bead strength can withstand the high torque experienced by heavy trucks during cornering.



D Puncture Resistance

The large tread blocks and cut-resistant compound prevent road debris from penetrating the tire.



E Slip Resistance

The unidirectional tread design offers better lateral stability, reducing the risk of slipping.



F Reinforced Bead Design

The strengthened bead accommodates high loads while ensuring driving stability.

G Robust carcass Construction

The application of UHT steel belts creates a sturdy tire structure suitable for short-distance heavy-load transportation needs.

Size	PR	Load Range	LI/SS	Tread Depth (32nds)
315/80R22.5	20	L	156/153K	27

GREENTOUR Reference Chart

Series	Position	Size	Pattern	PR	Load Range	Load Index	Standard Rim (Inch)	Overall Diameter (Inch)	Section Width (Inch)	Tread Depth (32nds)	Load		Pressure	
											S(lbs)	D(lbs)	S(psi)	D(psi)
RouteTour	Steer / Trailer	295/80R22.5	GSL920	18PR	J	154/149M	9.00	41.1	12.3	20	8270	7160	123	123
		315/80R22.5		18PR	J	156/150L(154/150M)	9.00	42.4	12.4	20	8820	7385	125	125
		295/75R22.5	GSL921	16PR	H	146/143M	9.00	39.9	12.8	18	6610	6005	120	120
		11R22.5		16PR	H	146/143M	8.25	41.5	12.8	18	6610	6005	120	120
		11R24.5		16PR	H	149/146M	8.25	43.5	12.8	18	7160	6610	120	120
	Drive	315/80R22.5	GDL821	18PR	J	156/150L(154/150M)	9.00	42.6	10.9	22	8820	7385	125	125
		295/75R22.5	GDL812	16PR	H	146/143L	9.00	40.4	11.5	28	6610	6005	120	120
		11R22.5		16PR	H	146/143L	8.25	41.9	11.5	28	6610	6005	120	120
	Trailer	295/75R22.5	GTL320	14PR	G	144/141M	9.00	39.9	8.5	11	6175	5675	110	110
		11R22.5		14PR	G	144/142M	8.25	41.5	8.5	12	6175	5840	105	105
VersaTour	Steer / Trailer	205/75R17.5	GSR110	14PR	G	124/122M	6.00	29.6	8.0	16	3525	3315	110	110
		215/75R17.5		16PR	H	135/133L(128/126M)	6.00	30.2	8.3	16	4805	4540	125	125
		235/75R17.5		18PR	J	143/141L(132/130M)	6.75	31.4	9.2	16	6005	5675	125	125
		245/70R17.5		18PR	J	143/141K	7.50	31.1	9.8	16	6005	5675	130	130
		225/70R19.5		14PR	G	128/126L	6.75	31.9	8.9	16	3970	3750	110	110
		245/70R19.5		18PR	J	144/142J(136/134M)	7.50	33.0	9.8	16	6175	5840	130	130
		265/70R19.5		18PR	J	143/141J(140/138M)	7.50	34.1	10.3	17	6005	5675	123	123
		285/70R19.5		18PR	J	150/148K(146/144M)	8.25	35.2	11.1	16	7390	6945	130	130
		255/70R22.5		16PR	H	140/137M	7.50	36.6	10.0	17	5510	5070	120	120
		295/75R22.5		14PR	G	144/141L	9.00	39.9	12.8	20	6175	5675	110	110
		295/75R22.5		16PR	H	146/143L	9.00	39.9	11.7	20	6610	6005	120	120
		11R22.5		16PR	H	146/143M	8.25	41.7	12.8	20	6610	6005	120	120
	Drive	275/80R22.5	GDR210	16PR	H	149/146L	8.25	39.8	10.8	25	7160	6610	123	123
		205/75R17.5	GDR220	14PR	G	124/122L	6.00	29.6	8.0	18	3525	3315	110	110
		215/75R17.5		16PR	H	135/133L(128/126M)	6.00	30.2	8.3	18	4805	4540	125	125
		235/75R17.5		18PR	J	143/141L(132/130M)	6.75	31.4	9.2	18	6005	5675	125	125
		265/70R19.5		18PR	J	143/141J(140/138M)	7.50	34.1	10.3	19	6005	5675	123	123
		285/70R19.5		18PR	J	150/148K(146/144M)	8.25	35.2	11.1	20	7390	6945	130	130
EnduraTour	Drive	315/80R22.5	GDM612	20PR	L	156/153K	9.00	42.6	12.3	27	8820	8050	125	125
	All-Position	315/80R22.5	GAM510+	18PR	J	156/150L(154/150M)	9.00	42.4	12.3	21	8820	7385	125	125



Reference Chart

LOAD RANGE & TREAD DEPTHS IN 32NDS INDICATE AVAILABILITY

SIZES	RouteTour					VersaTour			EnduraTour	
	GSL920	GSL921	GDL821	GDL812	GTL320	GSR110	GDR210	GDR220	GAM510 ⁺	GDM612
205/75R17.5						G-16		G-18		
215/75R17.5						H-16		H-18		
235/75R17.5						J-16		J-18		
245/70R17.5						G-16				
225/70R19.5						G-16				
245/70R19.5						J-16				
265/70R19.5						J-17		J-19		
285/70R19.5						J-16		J-20		
255/70R22.5						H-17				
275/80R22.5							H-25			
295/75R22.5		H-18		H-28	G-11	G-20 H-20				
295/80R22.5	J-20									
315/80R22.5	J-20		J-22						J-21	L-27
11R22.5		H-18		H-28	G-12	H-20				
11R24.5		H-18								

Limited Warranty

TRUCK TIRES

This Limited Warranty/Adjustment Policy provides tire replacement under specified conditions. This policy applies to GREENTOUR radial truck tires used in normal service displaying warrantable conditions. Tires that become unserviceable or wear out because of neglect or mistreatment are excluded from the GREENTOUR Tires Warranty coverage.

WARRANTY ELIGIBILITY

- This warranty applies to any replacement truck tire operated in normal service use bearing the GREENTOUR brand name and complete Department of Transportation serial identification number.
- All eligible tires are covered against defects in workmanship and materials under this warranty. Tires are covered by this warranty for the life of the original usable tread depth (The original useable tread is determined by measuring the depth on the tread of a new tire to the top of the tread wear indicator bars molded at 1.6mm) within 72 months from the date of manufacture.
- This warranty applies only to the original purchaser, and is not transferrable to any other party. The warranty time period does not represent the expected service life for tires covered by this warranty.

WHAT IS WARRANTED

Tires that become unserviceable within 72 months of the date of manufacture, for reasons other than those stated below, will be replaced under this warranty.

WHAT IS NOT WARRANTED

Tires that have become unserviceable for the following reason:

- Improper repairs or repairs that have failed. Will void this Limited Warranty.
- Improper maintenance which can include: improper inflation or other maintenance abuses.
- Improper application or operation such as speeding, improper tire size and/or specification.
- Improper mounting/dismounting procedures, tires/wheel assembly imbalance.
- Mechanical irregularities in the vehicle or wheel, such as bent wheel assemblies, misalignment, worn or faulty components.
- Accident, corrosion, vandalism, fire or damages caused by contamination from petroleum or other chemical products.

- Irregular tread wear, rapid tread wear or worn-out tread (remaining tread depth less than 1.6mm) is not covered under the GREENTOUR Tires Limited Warranty.

Road hazard injuries or damages caused by obstacles or debris, such as cuts, punctures (whether repairable or not), snags, bruises, tears, abrasions or impact breaks (whether repairable or not), etc.

ADDITIONAL EXCLUSIONS

- Materials added such as fillers, sealants, balancing substances and external tire treatments. If the added material is the cause of a failure the warranty will be deemed as void.
- Tires submitted for ride disturbance complaints after 1.6mm tread wear.
- Tires purchased as used.
- Tires branded by GREENTOUR Tires which denote special classification at the time of purchase, such as “NA” (non-adjustable), or tires altered by notching or buffing.
- Tires used on vehicles in racing or special applications.
- Tires rendered unserviceable due to snow chains or studs.
- Flat spotting due to improper storage or caused by brake lock.

ADJUSTMENT POLICY

When the original useable tread is worn 1.6mm or less, and a warrantable condition is found, the tire will be reimbursed at 100% of the current GREENTOUR purchasing price. When a tire has worn more than 1.6mm and a warrantable condition is found, GREENTOUR will reimburse the tire on a prorated basis.

GREENTOUR will multiply the % of leftover usable tread by the current GREENTOUR purchasing price at the time the claim is presented to GREENTOUR.

Payment = (Useable remaining tread depth / Usable original tread depth)* current Purchasing price.